

220 N. Smith Street

Suite 307

220 N. Smith Street, Palatine, IL 60067

[Click for Virtual Tour](#)

HAMILTON PARTNERS  
www.hamiltonpartners.com



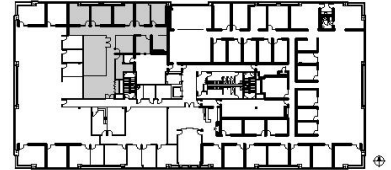
### DETAILS

**Square Feet:** 2,575 S.F.  
**Net Rent:** \$14.00/S.F.  
**OP. Expense:** \$8.15/S.F.  
**Tax:** \$6.75/S.F.  
**Gross Rent:** \$28.90/S.F.

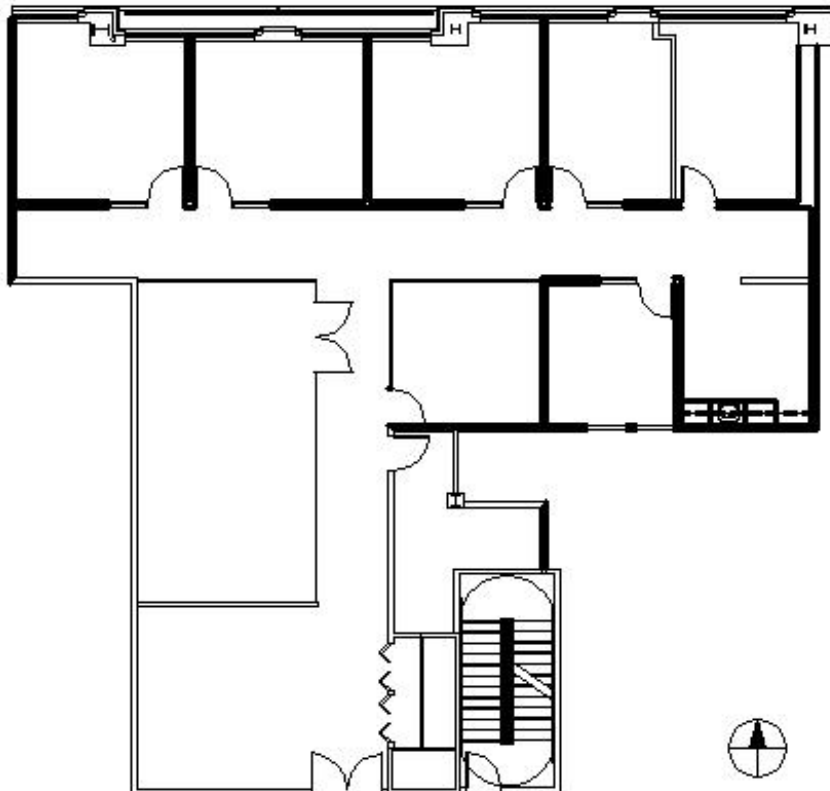
### SUITE FEATURES

- Virtual Tour Here
- 6 Private Offices
- 2 Conference Rooms
- Kitchen / Break Room with Sink and Cabinets
- IT / Server Room
- Reception Area
- Conveniently located directly across from Palatine Metra Station
- Covered parking available for all tenants
- Great location in heart of downtown Palatine with shops and restaurants
- Amenities include casual dining, hair salon/spa, nail salon and dry cleaners

### THIRD FLOOR PLAN



### SPACE PLAN



HAMILTON PARTNERS - Sponsoring Broker

**Brian Lunt**

[blunt@hpre.com](mailto:blunt@hpre.com)

P 847-459-2249

F 847-459-8918

**Mike Rolfs**

[mrolfs@hpre.com](mailto:mrolfs@hpre.com)

P 847-459-5561

F 847-459-8918