

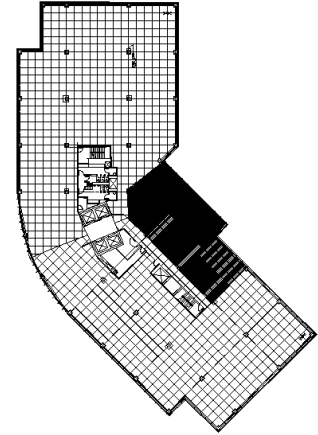
801 Warrenville Road  
Suite 750  
801 Warrenville Road  
Lisle, IL 60532



### SUITE FEATURES

- Beautiful glass entry in elevator lobby
- Contemporary finishes throughout
- 3 perimeter private offices
- 1 conference room with glass
- Large eat-in kitchen
- Efficient layout

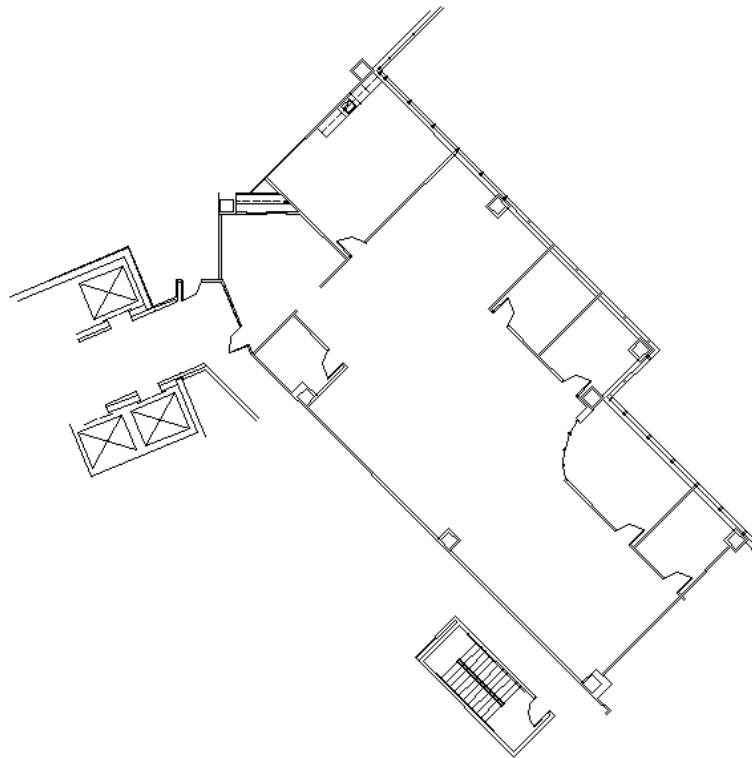
### SEVENTH FLOOR PLAN



### DETAILS

**Square Feet:** 4,167 S.F.  
**Net Rent:** \$14.50/S.F.  
**OP. Expense:** \$7.94/S.F.  
**Tax:** \$2.84/S.F.  
**Gross Rent:** \$26.35/S.F.

### SPACE PLAN



### HAMILTON PARTNERS - Sponsoring Broker

**David Andrews**

✉ [da@hpre.com](mailto:da@hpre.com)

C 6303270566

**Philip Sheridan**

✉ [phil\\_sheridan@hpre.com](mailto:phil_sheridan@hpre.com)

P 6307195567

C 6303032108