

Suite LL30  
3500 Lacey Road  
Downers Grove, IL 60515

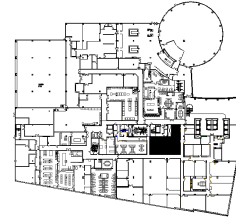
#### DETAILS

**Square Feet:** 2,472 S.F.  
**Net Rent:** \$10.00/S.F.  
**OP. Expense:** \$9.21/S.F.  
**Tax:** \$2.17/S.F.  
**Gross Rent:** \$21.38/S.F.

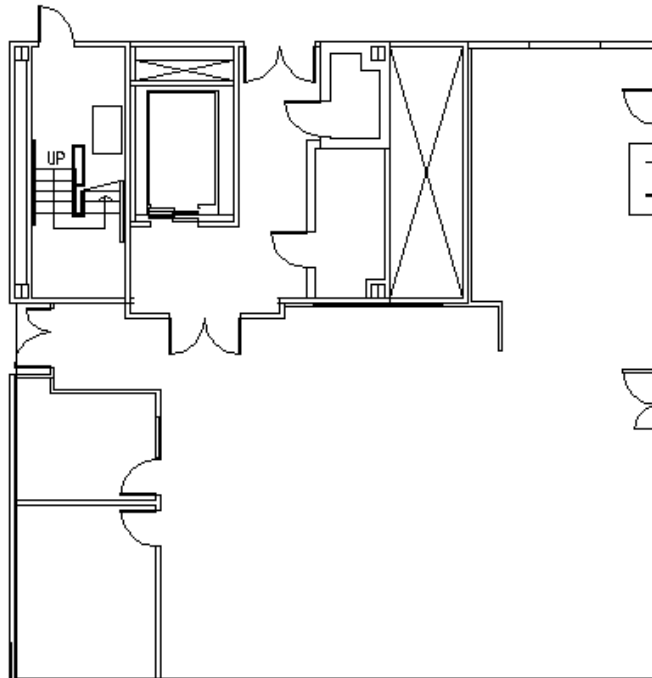
#### SUITE FEATURES

- Great access to lower lobby and cafeteria
- 2 interior offices within the premises
- Direct access to freight elevator

#### LOWER FLOOR PLAN



#### SPACE PLAN



#### HAMILTON PARTNERS - Sponsoring Broker

**David Andrews**

✉ [da@hpre.com](mailto:da@hpre.com)

C 6303270566

**Philip Sheridan**

✉ [phil\\_sheridan@hpre.com](mailto:phil_sheridan@hpre.com)

P 6307195567

C 6303032108