

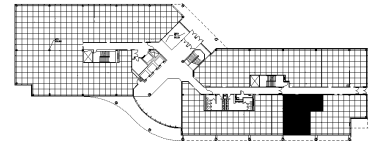
901 Warrenville Road
Suite 104
901 Warrenville Road
Lisle, IL 60532



SUITE FEATURES

- Incredible small suite opportunity now available
- 1 perimeter private office
- Great kitchen within the Premises
- Separate IT workroom/storage
- Nice open area for workstations with full height windows

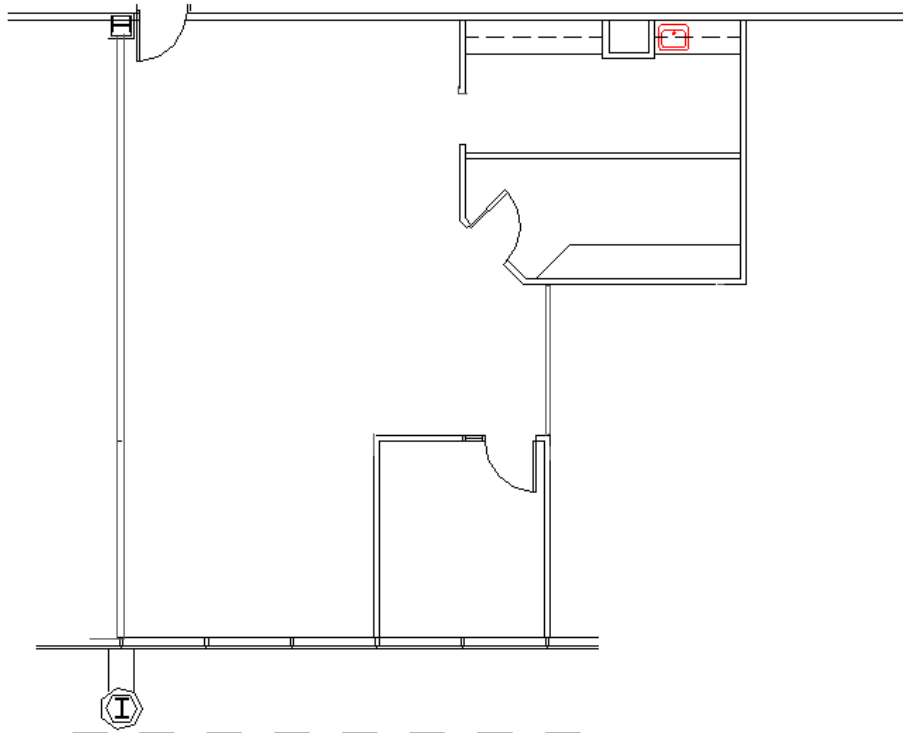
FIRST FLOOR PLAN



DETAILS

Square Feet: 1,281 S.F.
Net Rent: \$15.75/S.F.
OP. Expense: \$8.17/S.F.
Tax: \$2.64/S.F.
Gross Rent: \$27.67/S.F.

SPACE PLAN



HAMILTON PARTNERS - Sponsoring Broker

David Andrews

✉ da@hpre.com

C 6303270566

Philip Sheridan

✉ phil_sheridan@hpre.com

P 6307195567
C 6303032108

Paul O'Connor

✉ poconnor@hamiltonpartners.com

C 6309210142