

701 Warrenville Road
Suite 205
701 Warrenville Road
Lisle, IL 60532



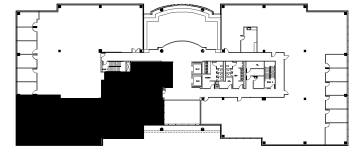
DETAILS

Square Feet: 5,659 S.F.
Net Rent: \$13.75/S.F.
OP. Expense: \$9.62/S.F.
Tax: \$2.65/S.F.
Gross Rent: \$25.66/S.F.

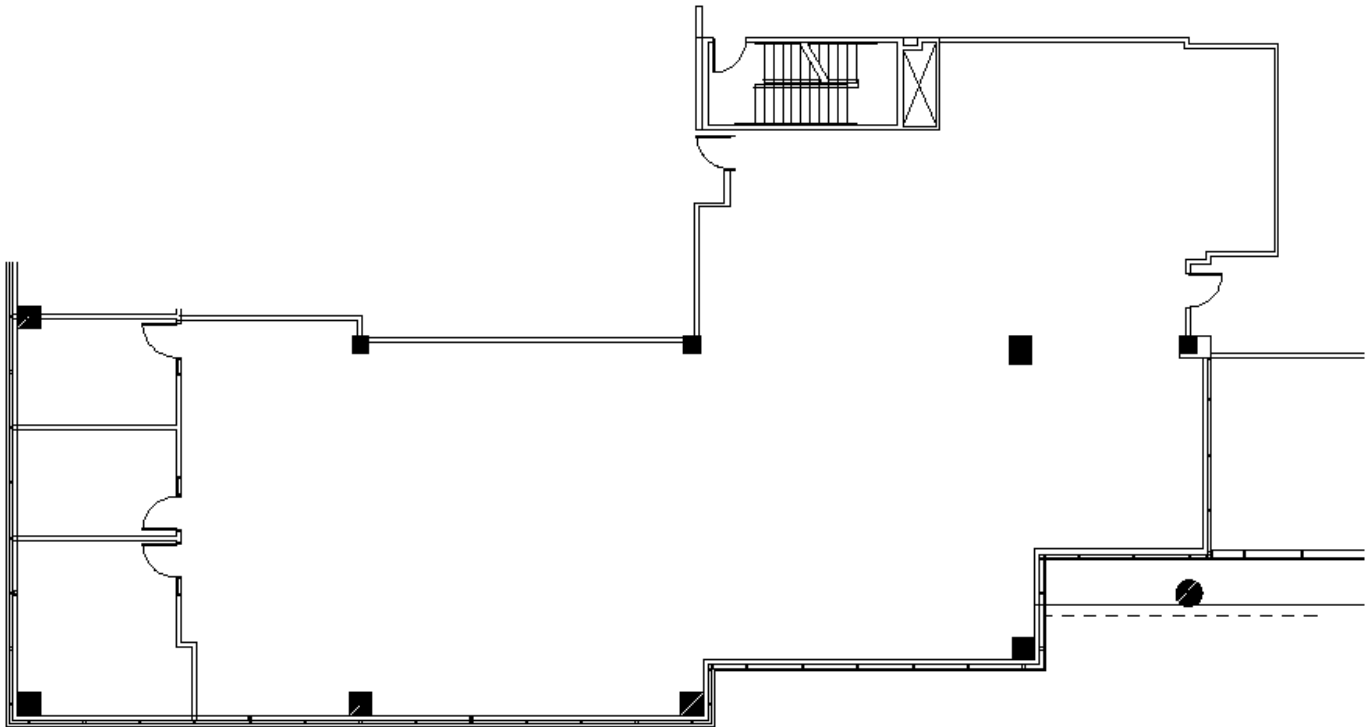
SUITE FEATURES

- Terrific tech space ready to be customized for your office!
- 3 existing private offices on Western facade
- Flexible space planning in open space
- Opportunity for 4 corner offices
- Beautiful views of landscaping
- Open ceiling concept available

SECOND FLOOR PLAN



SPACE PLAN



HAMILTON PARTNERS - Sponsoring Broker

David Andrews

✉ da@hpre.com

C 6303270566

Philip Sheridan

✉ phil_sheridan@hpre.com

P 6307195567

C 6303032108