

1011 Warrenville Road

Suite 100, 110 & 115

1011 Warrenville Road, Lisle, IL 60532

HAMILTON PARTNERS
www.hamiltonpartners.com



DETAILS

Square Feet: 12,406 S.F.

Net Rent: \$15.75/S.F.

OP. Expense: \$7.88/S.F.

Tax: \$2.89/S.F.

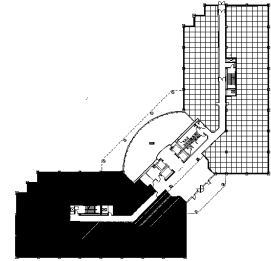
Gross Rent: \$28.08/S.F.

SUITE FEATURES

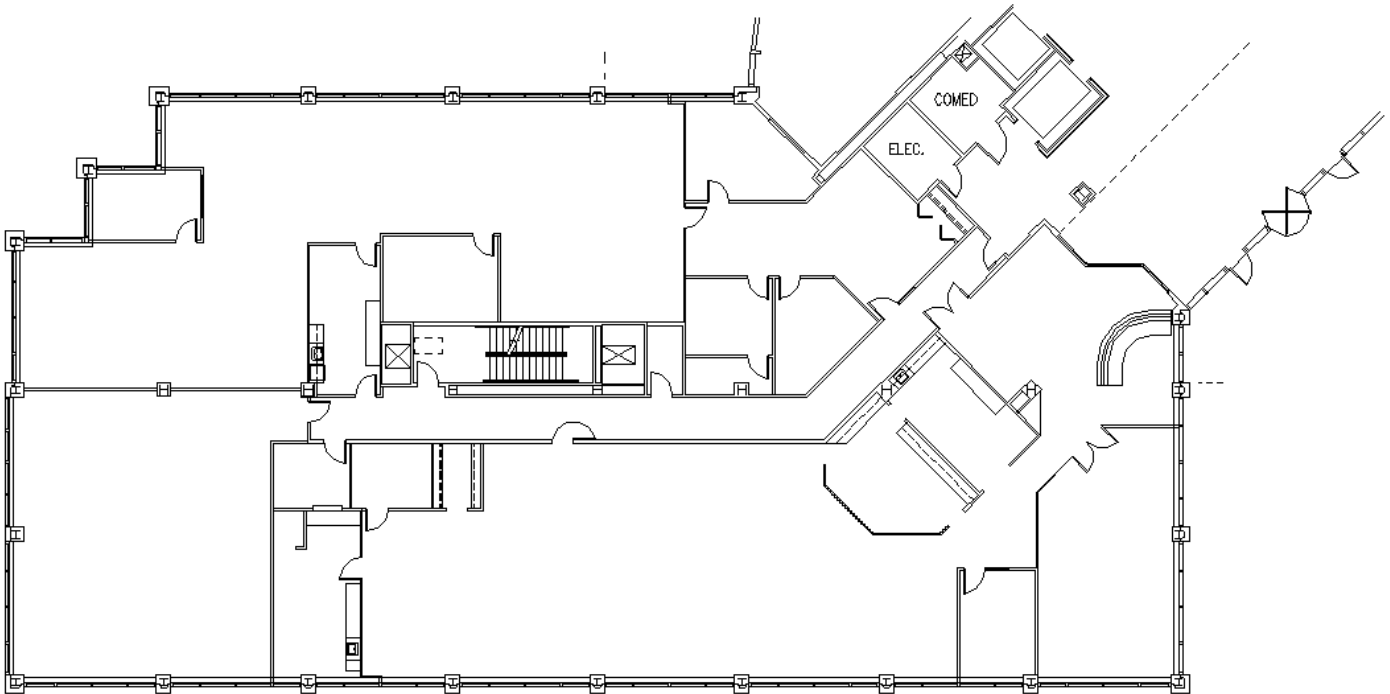
- Your chance to lease the entire western wing of 1011 Warrenville!
- Space is available 9/1/2017
- Immediately visible from building entrance
- Beautiful views of pond and atrium
- Kitchen/workroom/conference room within space
- Three private offices
- Large glass boardroom at entrance
- Surrounded by windows

Â

FIRST FLOOR PLAN



SPACE PLAN



HAMILTON PARTNERS - Sponsoring Broker

David Andrews

da@hpre.com

C 6303270566

Philip Sheridan

phil_sheridan@hpre.com

P 6307195567

C 6303032108

Paul O'Connor

poconnor@hamiltonpartners.com

C 6309210142