

Suite LL50
3500 Lacey Road
Downers Grove, IL 60515

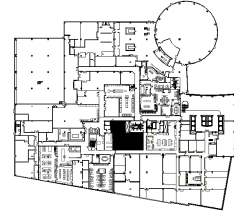
DETAILS

Square Feet: 2,958 S.F.
Net Rent: \$10.00/S.F.
OP. Expense: \$9.21/S.F.
Tax: \$2.17/S.F.
Gross Rent: \$21.38/S.F.

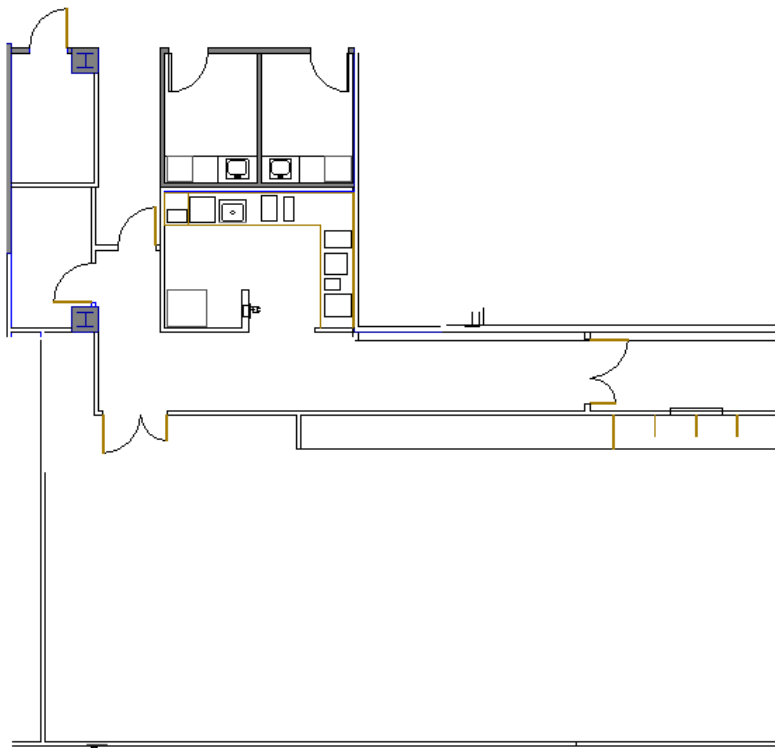
SUITE FEATURES

- Office/storage space
- Kitchen with solid surface countertop within premises

LOWER FLOOR PLAN



SPACE PLAN



HAMILTON PARTNERS - Sponsoring Broker

David Andrews

✉ da@hpre.com

C 6303270566

Philip Sheridan

✉ phil_sheridan@hpre.com

P 6307195567

C 6303032108