

220 N. Smith Street

Suite 120

220 N. Smith Street, Palatine, IL 60067



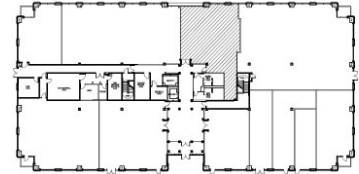
### DETAILS

**Square Feet:** 2,161 S.F.  
**Net Rent:** \$14.00/S.F.  
**OP. Expense:** \$7.87/S.F.  
**Tax:** \$6.59/S.F.  
**Gross Rent:** \$28.46/S.F.

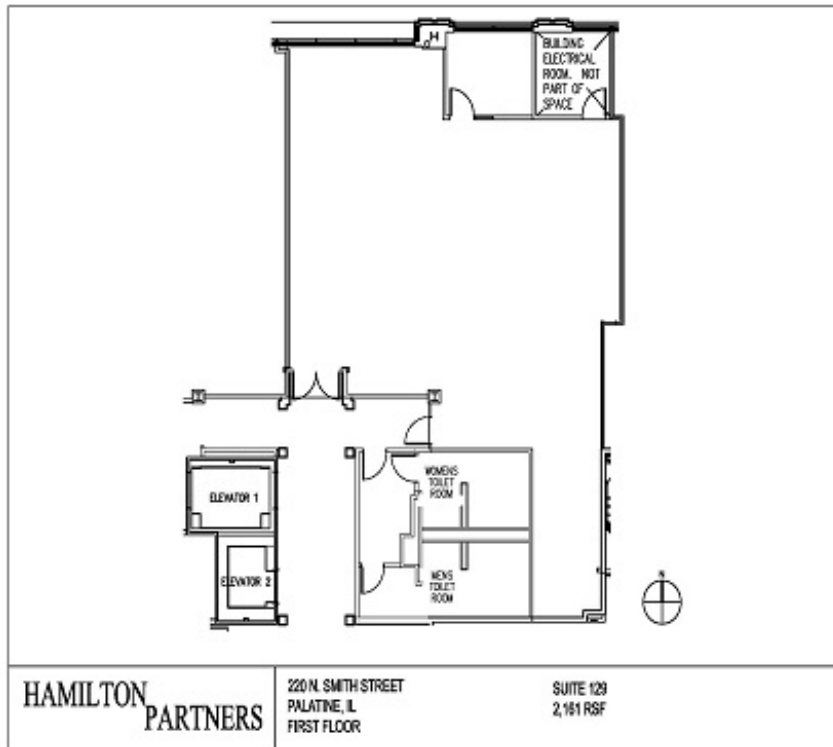
### SUITE FEATURES

- Prime Location in Downtown Palatine
- High Ceilings
- General Open Area
- Adjacent to Palatine Metra Station
- Covered Parking for All Tenants
- Walking Distance to Restaurants & Shops
- Class A Building with Grand Lobby Entrance

### FIRST FLOOR PLAN



### SPACE PLAN



### HAMILTON PARTNERS - Sponsoring Broker

**Brian Lunt**

[blunt@hpre.com](mailto:blunt@hpre.com)

P 847-459-2249

F 847-459-8918

**Mike Rolfs**

[mrolfs@hpre.com](mailto:mrolfs@hpre.com)

P 847-459-5561

F 847-459-8918