

Suite 210
3500 Lacey Road
Downers Grove, IL 60515

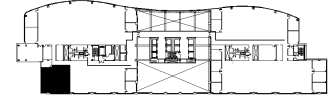
DETAILS

Square Feet: 2,332 S.F.
Net Rent: \$21.00/S.F.
OP. Expense: \$9.51/S.F.
Tax: \$2.48/S.F.
Gross Rent: \$32.99/S.F.

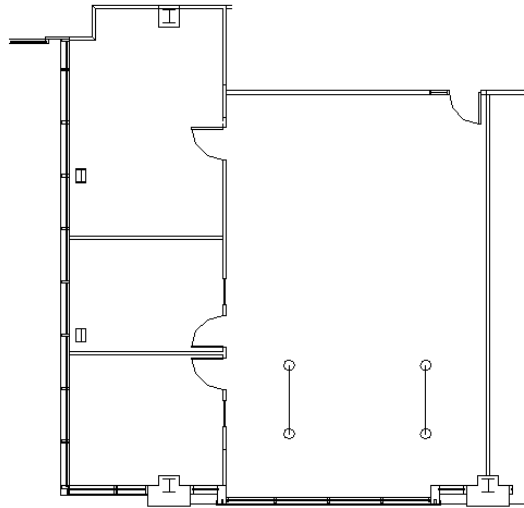
SUITE FEATURES

- Last office available at 3500 Lacey!
- Beautiful corner suite
- 3 private offices
- Open area for workstations
- Natural light for all employees in the space!

SECOND FLOOR PLAN



SPACE PLAN



HAMILTON PARTNERS - Sponsoring Broker

David Andrews

✉ da@hpre.com

C 6303270566

Philip Sheridan

✉ phil_sheridan@hpre.com

P 6307195567

C 6303032108

Paul O'Connor

✉ poconnor@hamiltonpartners.com

P 630-250-4876

F 630-251-8521