

220 N. Smith Street
Suite 315
220 N. Smith Street, Palatine, IL 60067

HAMILTON PARTNERS

www.hamiltonpartners.com



DETAILS

Square Feet: 8,687 S.F.
Net Rent: \$14.00/S.F.
OP. Expense: \$8.15/S.F.
Tax: \$6.75/S.F.
Gross Rent: \$28.90/S.F.

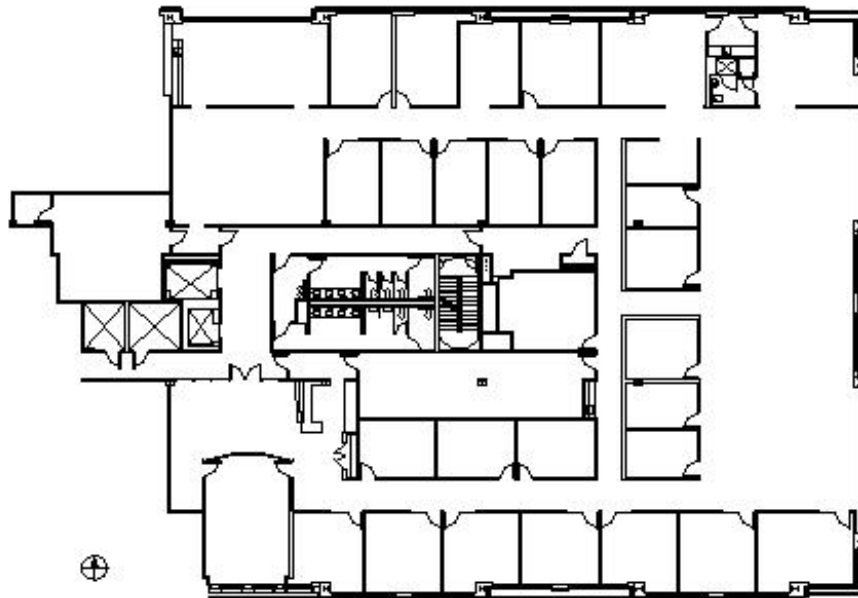
SUITE FEATURES

- Conveniently located directly across from Palatine Metra Station
- Covered parking available for all tenants
- Great location in heart of downtown Palatine with shops and restaurants
- Amenities include restaurant and dry cleaners

THIRD FLOOR PLAN



SPACE PLAN



HAMILTON PARTNERS - Sponsoring Broker

Brian Lunt

✉ blunt@hpre.com

P 847-459-2249

F 847-459-8918

Mike Rolfs

✉ mrolfs@hpre.com

P 847-459-5561

F 847-459-8918