

801 Warrenville Road

Suite 155

801 Warrenville Rd, Lisle, IL 60532

HAMILTON PARTNERS  
www.hamiltonpartners.com



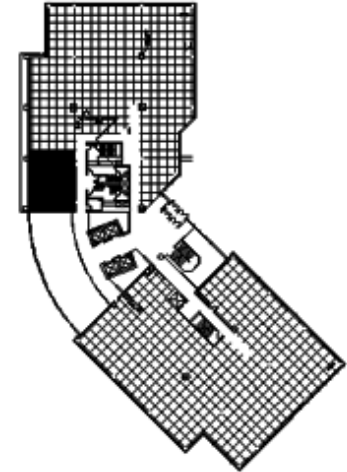
### DETAILS

**Square Feet:** 1,220 S.F.  
**Net Rent:** \$14.50/S.F.  
**OP. Expense:** \$7.96/S.F.  
**Tax:** \$2.86/S.F.  
**Gross Rent:** \$26.35/S.F.

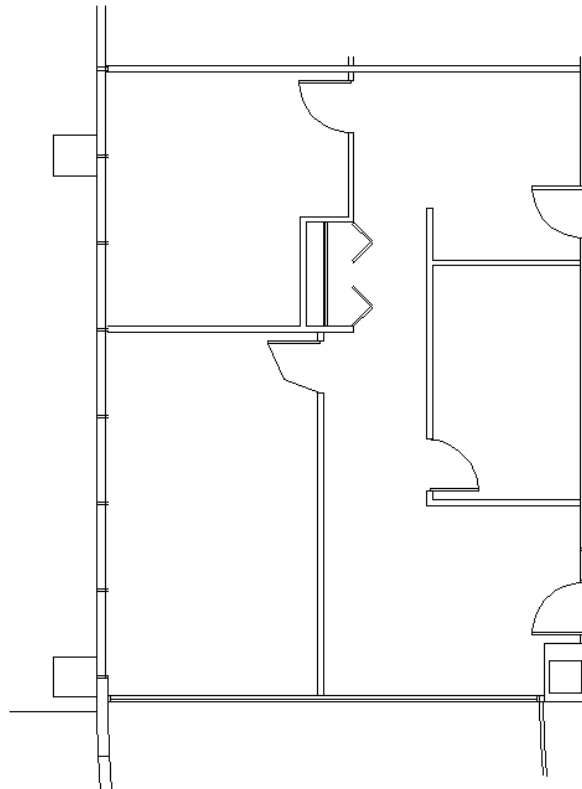
### SUITE FEATURES

- Available 4/1/19!
- Corner location
- Kitchenette
- Glass entry door
- Conference room
- Office
- Incredible views of pond and atrium

### FIRST FLOOR PLAN



### SPACE PLAN



### HAMILTON PARTNERS - Sponsoring Broker

**Gary Mori**

[✉ gary\\_mori@hpre.com](mailto:gary_mori@hpre.com)

P 630-719-5560

F 630-719-5570

**Philip Sheridan**

[✉ phil\\_sheridan@hpre.com](mailto:phil_sheridan@hpre.com)

P 6307195567

C 6303032108

**David Andrews**

[✉ da@hpre.com](mailto:da@hpre.com)

C 6303270566