

801 Warrenville Road

Suite 600 & 605

801 Warrenville Road, Lisle, IL 60532

HAMILTON PARTNERS
www.hamiltonpartners.com



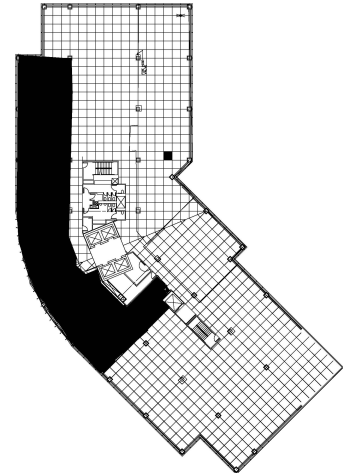
DETAILS

Square Feet: 8,308 S.F.
Net Rent: \$14.50/S.F.
OP. Expense: \$9.22/S.F.
Tax: \$2.63/S.F.
Gross Rent: \$26.35/S.F.

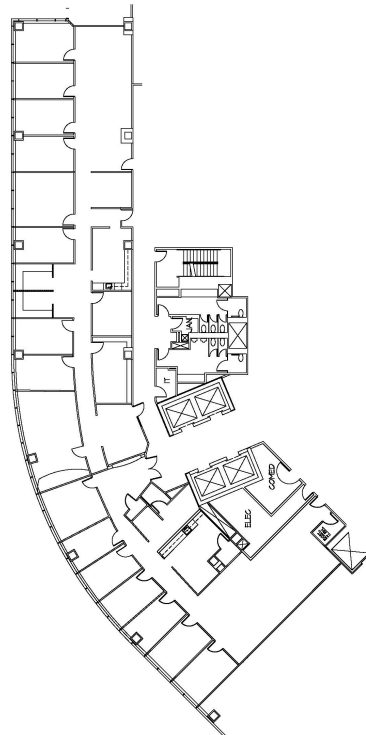
SUITE FEATURES

- Glass entry in elevator lobby
- Beautiful pond views
- Efficient layout
- 15 private offices
- Conference Room
- Storage room/IT room
- Work/copy area
- 2 kitchens within premises

SIXTH FLOOR PLAN



SPACE PLAN



HAMILTON PARTNERS - Sponsoring Broker

David Andrews

da@hpre.com

C 6303270566

Philip Sheridan

phil_sheridan@hpre.com

P 6307195567

C 6303032108