

1011 Warrenville Road

Suite 300 & 325

1011 Warrenville Road, Lisle, IL 60532

HAMILTON PARTNERS
www.hamiltonpartners.com



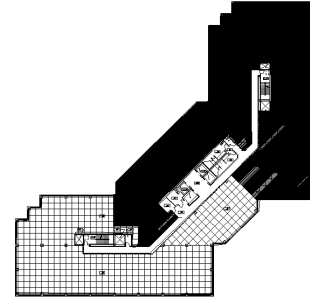
DETAILS

Square Feet: 18,555 S.F.
Net Rent: \$16.00/S.F.
OP. Expense: \$9.01/S.F.
Tax: \$2.61/S.F.
Gross Rent: \$27.62/S.F.

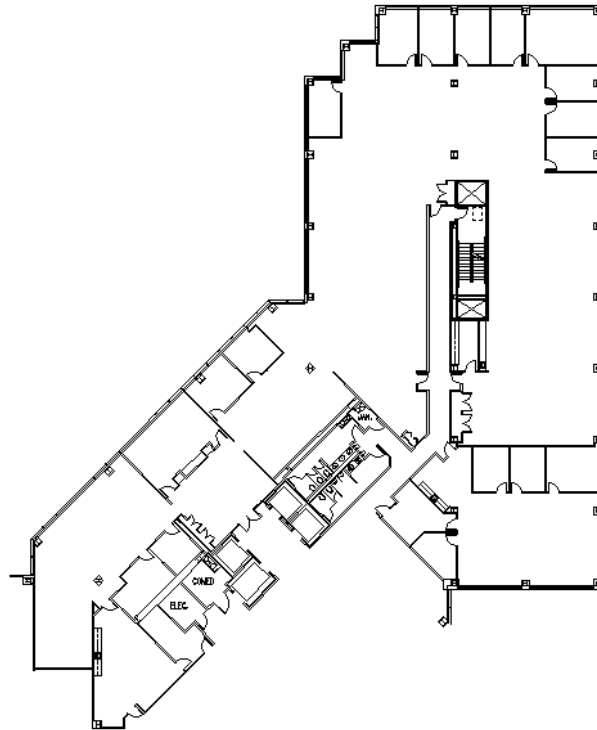
SUITE FEATURES

- Beautiful suite with nice finishes
- Reception area with glass door entry in elevator lobby
- Wide open space provides flexibility for workstations
- Natural light floods the space with windows on 4 sides
- 2 kitchens/breakrooms
- 14 private offices
- Conference room
- Training room

THIRD FLOOR PLAN



SPACE PLAN



HAMILTON PARTNERS - Sponsoring Broker

David Andrews

✉ da@hpre.com

P 630-719-5565

F 630-719-5570

Philip Sheridan

✉ phil_sheridan@hpre.com

P 630-719-5567

F 630-719-5570