

1011 Warrenville Road

Suite 150 & 160

1011 Warrenville Road, Lisle, IL 60532

HAMILTON PARTNERS
www.hamiltonpartners.com



DETAILS

Square Feet: 2,780 S.F.

Net Rent: \$16.00/S.F.

OP. Expense: \$8.72/S.F.

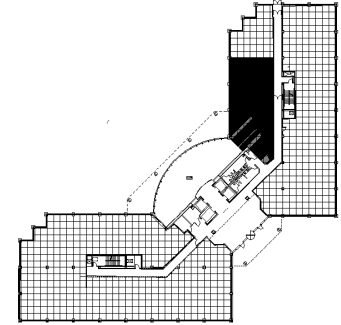
Tax: \$3.00/S.F.

Gross Rent: \$27.72/S.F.

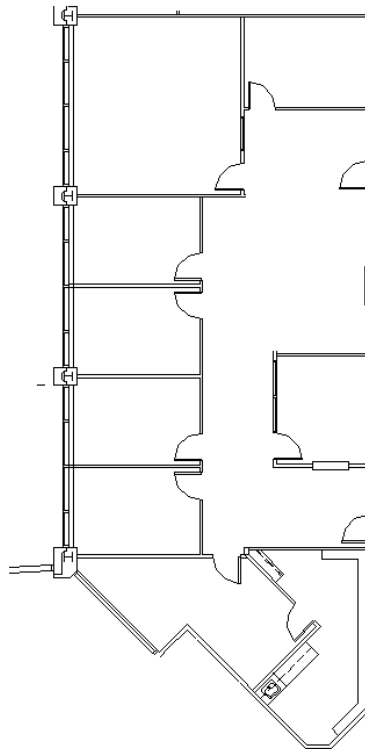
SUITE FEATURES

- Beautiful first floor space available immediately
- Second floor pond/atrium views
- 6 private offices
- Kitchen
- Workroom
- Large conference room

FIRST FLOOR PLAN



SPACE PLAN



CONTACT INFORMATION

David Andrews

✉ da@hpre.com

P 630-719-5565

F 630-719-5570

Philip Sheridan

✉ phil_sheridan@hpre.com

P 630-719-5567

F 630-719-5570