

220 N. Smith Street  
Suite 414  
220 N. Smith Street, Palatine, IL 60067

# HAMILTON PARTNERS

www.hamiltonpartners.com



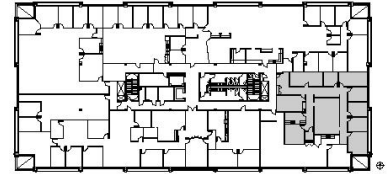
## DETAILS

**Square Feet:** 3,259 S.F.  
**Net Rent:** \$14.00/S.F.  
**OP. Expense:** \$8.15/S.F.  
**Tax:** \$6.75/S.F.  
**Gross Rent:** \$28.90/S.F.

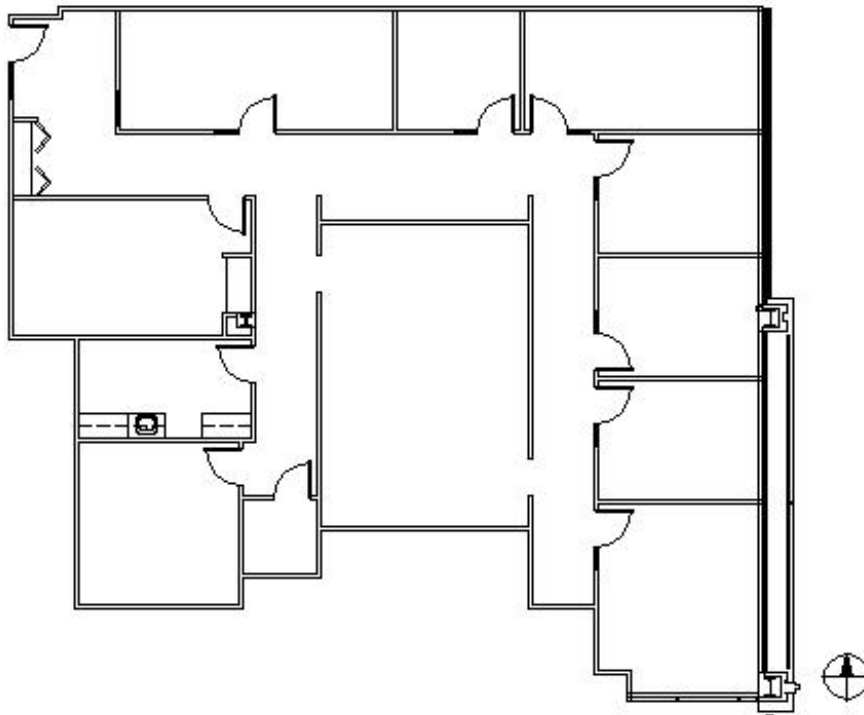
## SUITE FEATURES

- Available December 2019
- 6 Private Offices
- 2 Conference Rooms
- Kitchen / Break Room
- Reception
- Large Storage Room
- Server Room
- Conveniently located directly across from Palatine Metra Station
- Covered Parking Available for All Tenants
- Great Downtown Palatine Location with Shops & Restaurants

## FOURTH FLOOR PLAN



## SPACE PLAN



## HAMILTON PARTNERS - Sponsoring Broker

**Brian Lunt**

☐ [blunt@hpre.com](mailto:blunt@hpre.com)

P 847-459-2249

F 847-459-8918

**Mike Rolfs**

☐ [mrolfs@hpre.com](mailto:mrolfs@hpre.com)

P 847-459-5561

F 847-459-8918