

2001 Butterfield Road
Suite 1041
2001 Butterfield Road
Downers Grove, IL 60515



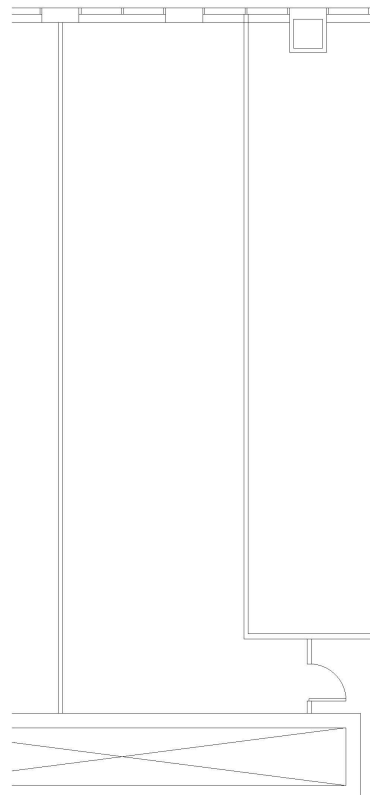
SUITE FEATURES

TENTH FLOOR PLAN

DETAILS

Square Feet: 1,082 S.F.
Net Rent: \$19.75/S.F.
OP. Expense: \$10.03/S.F.
Tax: \$2.57/S.F.
Gross Rent: \$32.35/S.F.

SPACE PLAN



HAMILTON PARTNERS - Sponsoring Broker

David Andrews

[✉ da@hpre.com](mailto:da@hpre.com)

C 6303270566

Philip Sheridan

[✉ phil_sheridan@hpre.com](mailto:phil_sheridan@hpre.com)

P 6307195567

C 6303032108