

Suite 230
3500 Lacey Road, Downers Grove, IL
60515

HAMILTON PARTNERS

www.hamiltonpartners.com

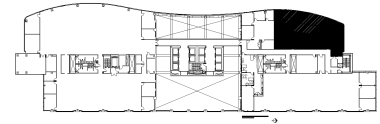
DETAILS

Square Feet: 4,008 S.F.
Net Rent: \$22.00/S.F.
OP. Expense: \$9.51/S.F.
Tax: \$2.48/S.F.
Gross Rent: \$33.99/S.F.

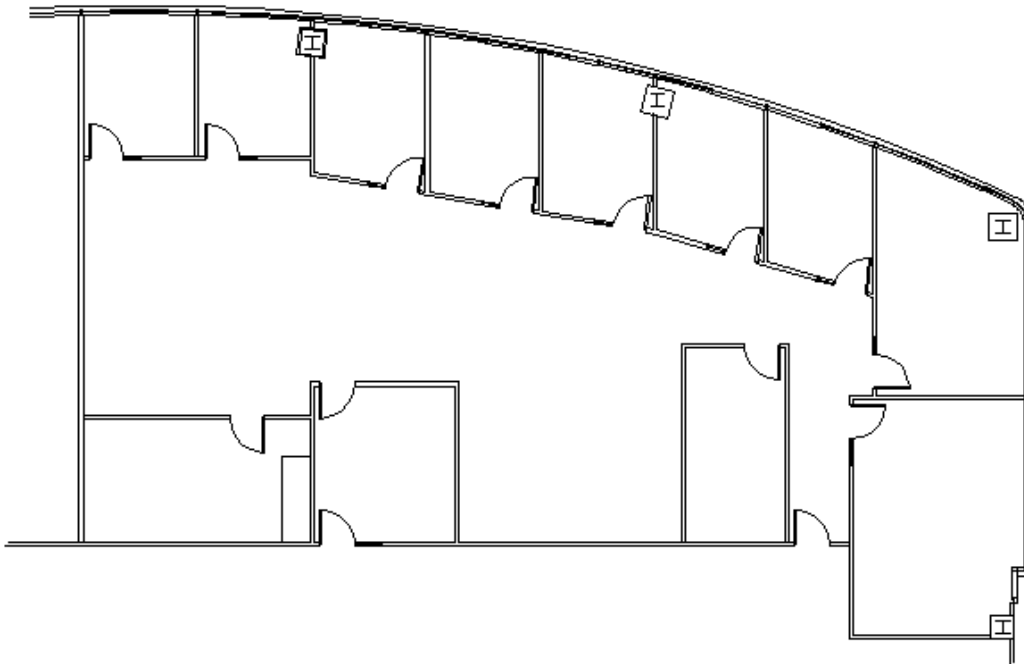
SUITE FEATURES

- Beautifully appointed corner space with amazing views
- Nice entry/greeting area
- Conference room for 10-12 people
- 8 perimeter private offices
- Great open space for workstations

FIRST FLOOR PLAN



SPACE PLAN



HAMILTON PARTNERS - Sponsoring Broker

David Andrews

✉ da@hpre.com

C 6303270566

Philip Sheridan

✉ phil_sheridan@hpre.com

P 6307195567

C 6303032108