

801 Warrenville Road

Suite 600

801 Warrenville Road, Lisle, IL 60532

[Click for Virtual Tour](#)

HAMILTON PARTNERS  
www.hamiltonpartners.com



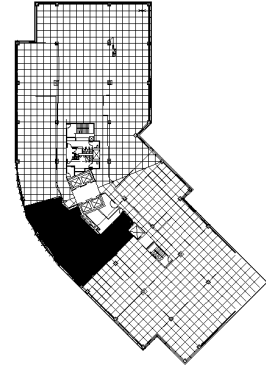
## DETAILS

**Square Feet:** 3,476 S.F.  
**Net Rent:** \$14.50/S.F.  
**OP. Expense:** \$9.22/S.F.  
**Tax:** \$2.63/S.F.  
**Gross Rent:** \$26.35/S.F.

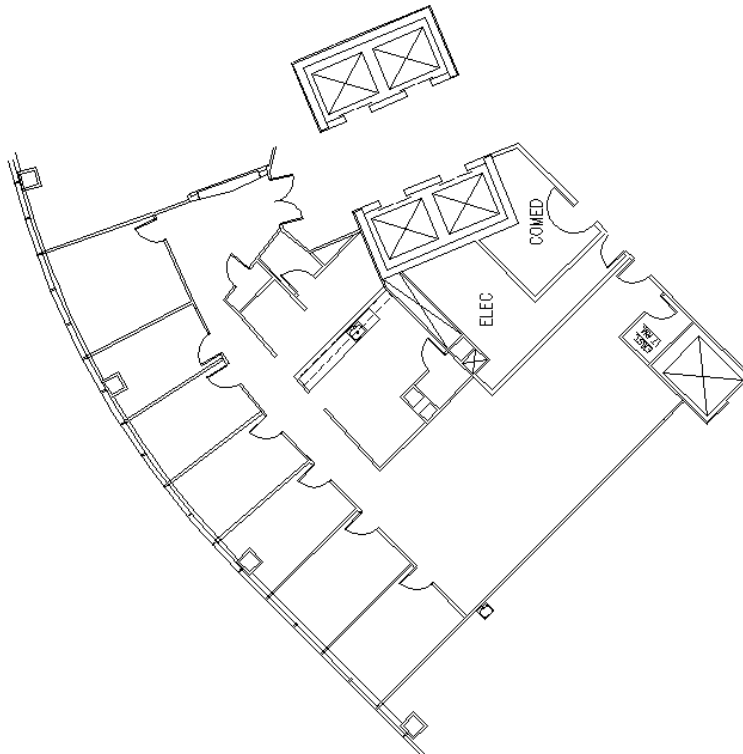
## SUITE FEATURES

- [Click here for Virtual Tour](#)
- Glass entry in elevator lobby
- Beautiful pond views
- Efficient layout
- 6 private offices
- Conference Room
- Storage room
- Work/copy area
- Eat-in kitchen within premises

## SIXTH FLOOR PLAN



## SPACE PLAN



HAMILTON PARTNERS - Sponsoring Broker

**David Andrews**

[da@hpre.com](mailto:da@hpre.com)

C 6303270566

**Philip Sheridan**

[phil\\_sheridan@hpre.com](mailto:phil_sheridan@hpre.com)

P 6307195567

C 6303032108