

1001 Warrenville Road
Suite 350
1001 Warrenville Road
Lisle, IL 60532

HAMILTON PARTNERS
www.hamiltonpartners.com



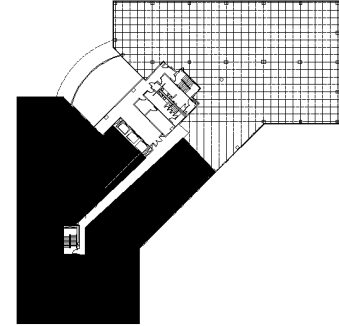
DETAILS

Square Feet: 14,267 S.F.
Net Rent: \$13.75/S.F.
OP. Expense: \$8.72/S.F.
Tax: \$2.22/S.F.
Gross Rent: \$25.55/S.F.

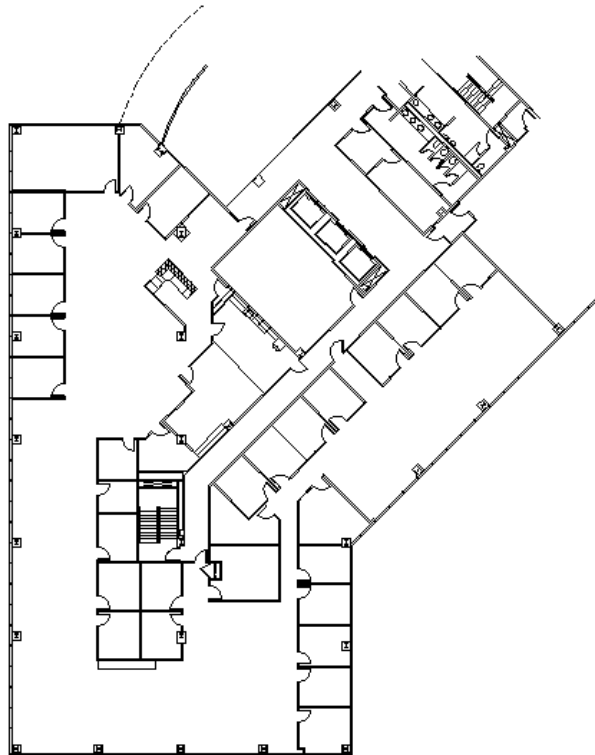
SUITE FEATURES

- Beautiful space with incredible views of pond
- 10 foot, floor-to-ceiling windows at the entrance!
- Incredible elevator lobby identity
- 26 perimeter private offices with full glass fronts
- Eat in kitchen
- Overlooks landscaped atrium
- Efficient space with great mix of offices and workstations

THIRD FLOOR PLAN



SPACE PLAN



HAMILTON PARTNERS - Sponsoring Broker

David Andrews

✉ da@hpre.com

C 6303270566

Philip Sheridan

✉ phil_sheridan@hpre.com

P 6307195567

C 6303032108