

1001 Warrenville Road

Suite 150

1001 Warrenville Road, Lisle, IL 60532

[Click for Virtual Tour](#)

HAMILTON PARTNERS
www.hamiltonpartners.com



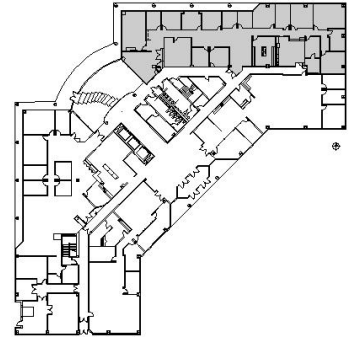
DETAILS

Square Feet: 6,828 S.F.
Net Rent: \$13.75/S.F.
OP. Expense: \$8.44/S.F.
Tax: \$2.73/S.F.
Gross Rent: \$25.55/S.F.

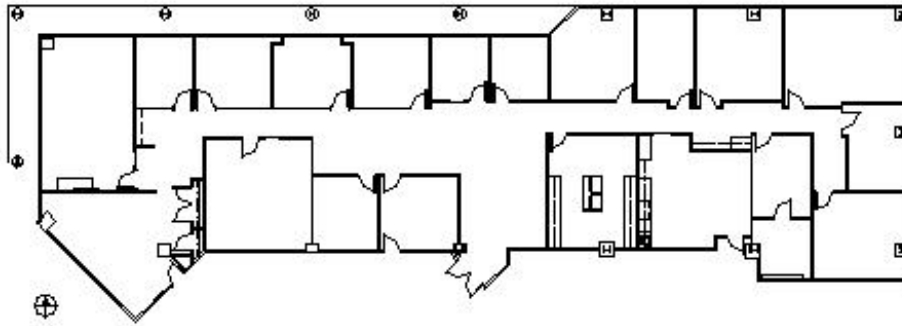
SUITE FEATURES

- [Click here for Virtual Tour](#)
- Incredible lobby space available 3 Q 2020!
- Strong tenant identity in the lobby of building overlooking building atrium
- Beautiful 10ft floor to ceiling windows with views of pond/landscaping
- 12 exterior private offices and 2 interior
- Large and medium conference rooms
- Nice eat-in kitchen
- IT closet and file storage
- Rooms for 4-6 workstations in current layout

FIRST FLOOR PLAN



SPACE PLAN



HAMILTON PARTNERS - Sponsoring Broker

David Andrews

da@hpre.com

C 6303270566

Philip Sheridan

phil_sheridan@hpre.com

P 6307195567

C 6303032108