

220 N. Smith Street
Suite 460
220 N. Smith Street, Palatine, IL 60067



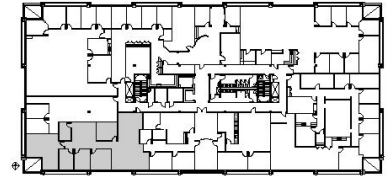
DETAILS

Square Feet: 2,761 S.F.
Net Rent: \$14.00/S.F.
OP. Expense: \$8.15/S.F.
Tax: \$6.75/S.F.
Gross Rent: \$28.90/S.F.

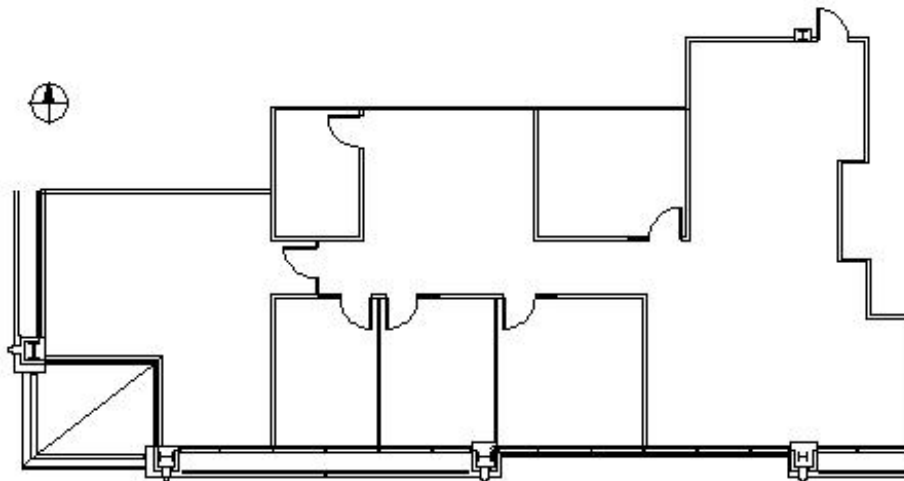
SUITE FEATURES

- 4 Private Offices
- Large Open Area
- 1 Interior Office
- Convenient Downtown Palatine Location
- Close to Metra Station
- Covered Parking

FOURTH FLOOR PLAN



SPACE PLAN



HAMILTON PARTNERS - Sponsoring Broker

Brian Lunt

✉ blunt@hpre.com

P 847-459-2249

F 847-459-8918