

220 N. Smith Street  
Suite 450-460  
220 N. Smith Street, Palatine, IL 60067



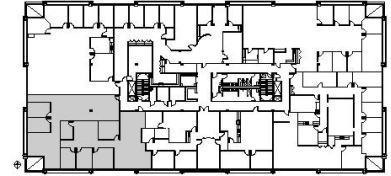
## DETAILS

**Square Feet:** 4,189 S.F.  
**Net Rent:** \$14.00/S.F.  
**OP. Expense:** \$7.87/S.F.  
**Tax:** \$6.59/S.F.  
**Gross Rent:** \$28.46/S.F.

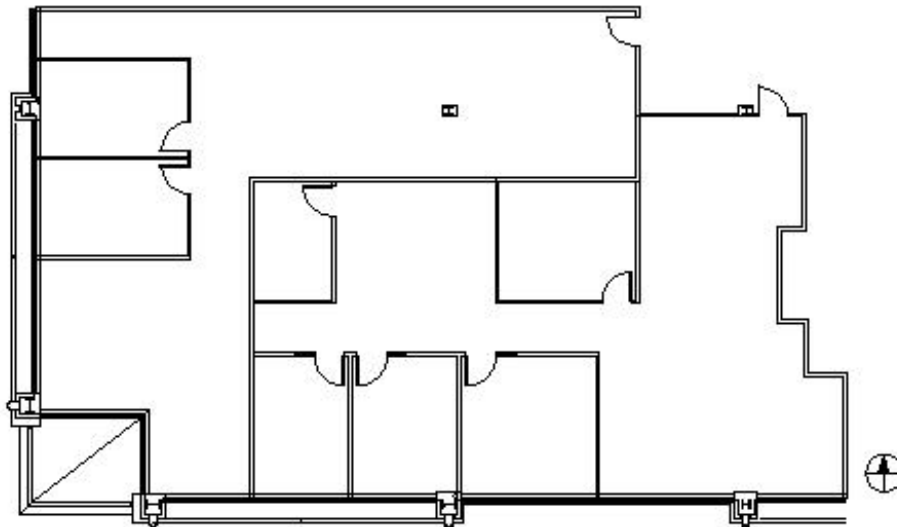
## SUITE FEATURES

- 7 Private Offices
- Large Open Area
- Convenient Downtown Palatine Location
- Close to Metra Station
- Covered Parking

## FOURTH FLOOR PLAN



## SPACE PLAN



## HAMILTON PARTNERS - Sponsoring Broker

### Brian Lunt

[blunt@hpre.com](mailto:blunt@hpre.com)

P 847-459-2249

F 847-459-8918

### Mike Rolfs

[mrolfs@hpre.com](mailto:mrolfs@hpre.com)

P 847-459-5561

F 847-459-8918