

220 N. Smith Street

Suite 450A

220 N. Smith Street, Palatine, IL 60067



### DETAILS

**Square Feet:** 1,428 S.F.

**Net Rent:** \$14.00/S.F.

**OP. Expense:** \$7.87/S.F.

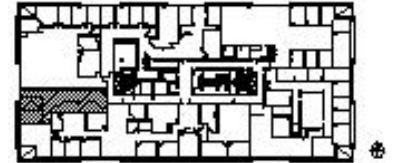
**Tax:** \$6.59/S.F.

**Gross Rent:** \$28.46/S.F.

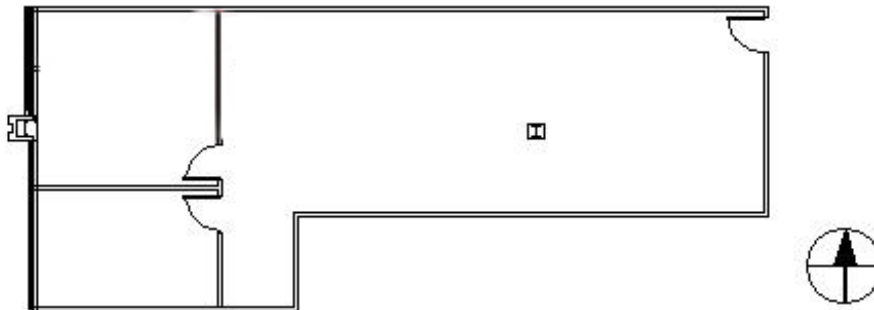
### SUITE FEATURES

- 2 Private Offices
- Large Reception Area
- Open Area
- Convenient Downtown Palatine Location
- Close to Metra Station
- Covered Parking

### FOURTH FLOOR PLAN



### SPACE PLAN



### HAMILTON PARTNERS - Sponsoring Broker

**Brian Lunt**

[blunt@hpre.com](mailto:blunt@hpre.com)

P 847-459-2249

F 847-459-8918

**Mike Rolfs**

[mrolfs@hpre.com](mailto:mrolfs@hpre.com)

P 847-459-5561

F 847-459-8918