

**2001 Butterfield Road**  
*Suite 270*  
2001 Butterfield Road  
Downers Grove, IL 60515

# HAMILTON PARTNERS

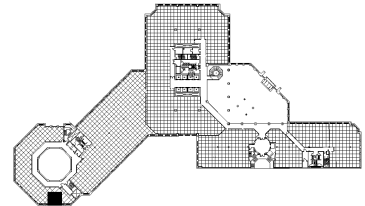
www.hamiltonpartners.com



## SUITE FEATURES

- Perfect for 1 or 2 person office
- \$1,190/month gross rent includes electric
- Close proximity to elevators and amenities
- Esplanade at Locust Point Amenities 9.24.19

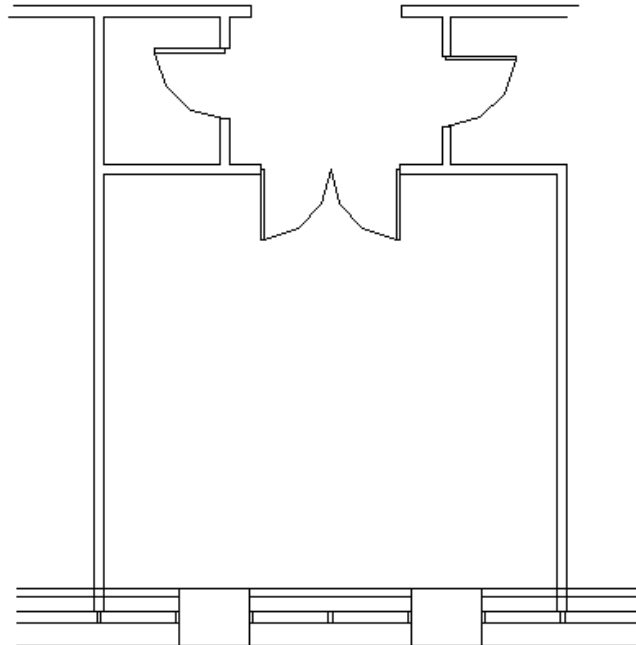
## SECOND FLOOR PLAN



## DETAILS

**Square Feet:** 450 S.F.  
**Net Rent:** \$19.75/S.F.  
**OP. Expense:** \$9.55/S.F.  
**Tax:** \$2.67/S.F.  
**Gross Rent:** \$31.82/S.F.

## SPACE PLAN



## HAMILTON PARTNERS - Sponsoring Broker

**Philip Sheridan**

☐ [phil\\_sheridan@hpre.com](mailto:phil_sheridan@hpre.com)

P 6307195567

C 6303032108

**David Andrews**

☐ [da@hpre.com](mailto:da@hpre.com)

C 6303270566