

220 N. Smith Street
Suite 406
220 N. Smith Street, Palatine, IL 60067

[Click for Virtual Tour](#)

HAMILTON PARTNERS
www.hamiltonpartners.com



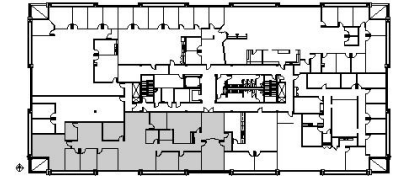
DETAILS

Square Feet: 5,021 S.F.
Net Rent: \$14.00/S.F.
OP. Expense: \$8.15/S.F.
Tax: \$6.75/S.F.
Gross Rent: \$28.90/S.F.

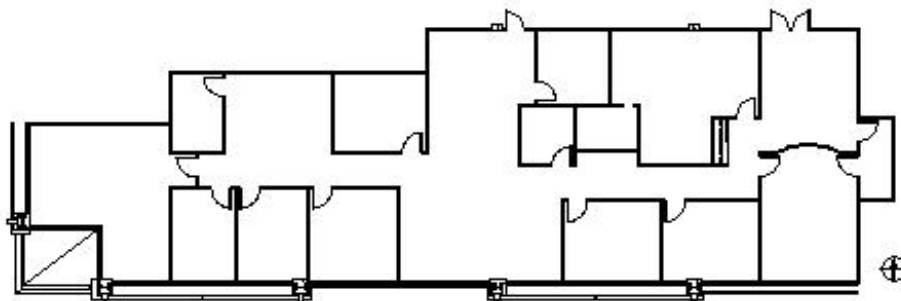
SUITE FEATURES

- Virtual Tour Here
- 8 Private Offices & 2 Executive Offices
- Conference Room & Reception Area
- Open Area for Cubicles
- Spacious Kitchen with Sink
- Conveniently located directly across from Palatine Metra Station
- Covered Parking Available for All Tenants
- Convenient Downtown Palatine Location with Shops & Restaurants

FOURTH FLOOR PLAN



SPACE PLAN



HAMILTON PARTNERS - Sponsoring Broker

Brian Lunt

blunt@hpre.com

P 847-459-2249

F 847-459-8918