

220 N. Smith Street  
Suite 300  
220 N. Smith Street, Palatine, IL 60067

# HAMILTON PARTNERS

www.hamiltonpartners.com



## DETAILS

**Square Feet:** 2,370 S.F.  
**Net Rent:** \$14.00/S.F.  
**OP. Expense:** \$8.15/S.F.  
**Tax:** \$6.75/S.F.  
**Gross Rent:** \$28.90/S.F.

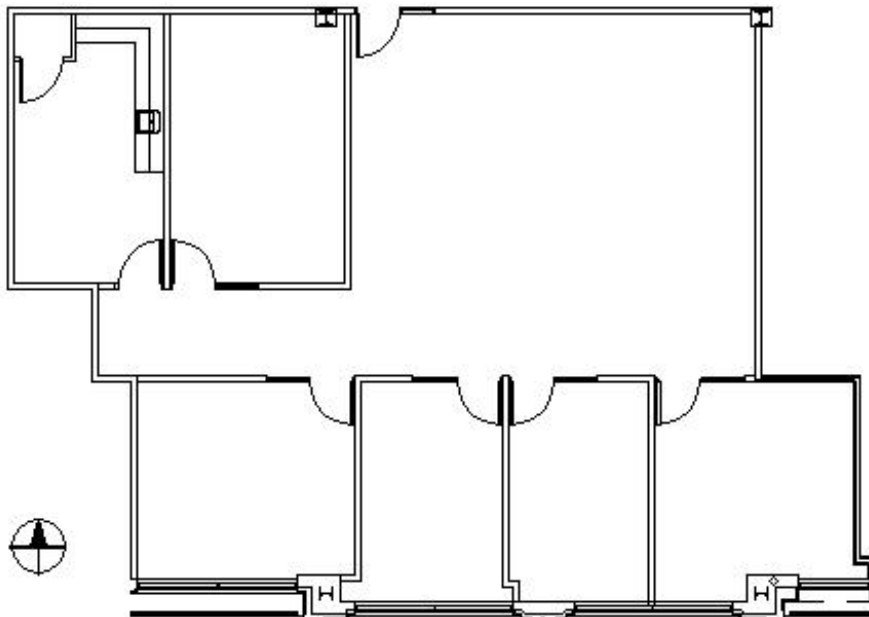
## SUITE FEATURES

- Great Location
- 5 Private Offices
- Break Room / Kitchen Area
- Large Open Area
- Adjacent to Palatine Metra Station
- Covered Parking for All Tenants
- Prime Location in Downtown Palatine
- Walking Distance to Restaurants & Shops
- Class A Building with Grand Lobby Entrance

## THIRD FLOOR PLAN



## SPACE PLAN



## HAMILTON PARTNERS - Sponsoring Broker

**Brian Lunt**

☐ [blunt@hpre.com](mailto:blunt@hpre.com)

P 847-459-2249

F 847-459-8918

**Mike Rolfs**

☐ [mrolfs@hpre.com](mailto:mrolfs@hpre.com)

P 847-459-5561

F 847-459-8918