

Esplanade I (2001 Butterfield Road)

Suite 510

2001 Butterfield Road, Downers Grove, IL
60515



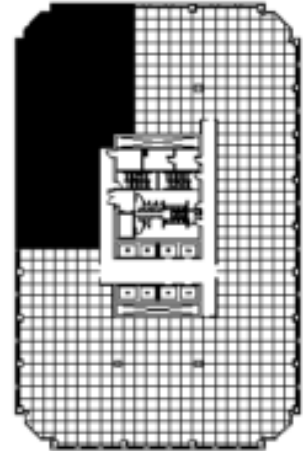
DETAILS

Square Feet: 5,561 S.F.
Net Rent: \$20.50/S.F.
OP. Expense: \$9.55/S.F.
Tax: \$2.67/S.F.
Gross Rent: \$32.72/S.F.

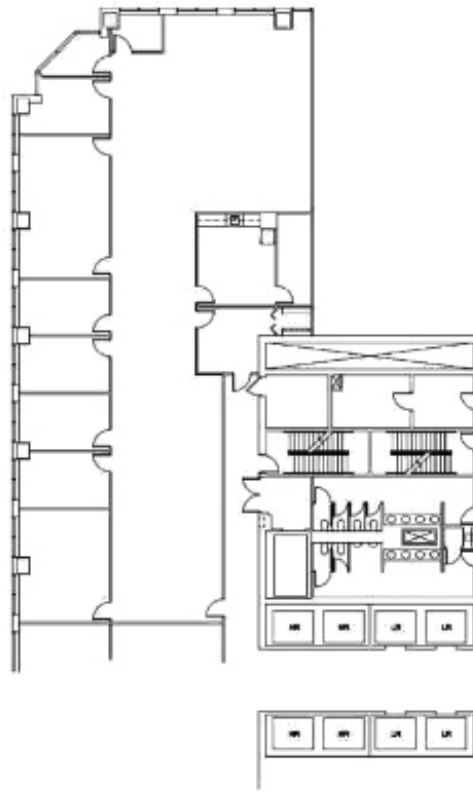
SUITE FEATURES

- Beautiful floor to ceiling windows with incredible views!
- 17 offices
- Kitchen
- Clerestory windows on all offices
- Large open area for workstations
- Glass entry in lobby
- Esplanade at Locust Point Amenities 9.24.19

FIFTH FLOOR PLAN



SPACE PLAN



CONTACT INFORMATION

David Andrews

✉ da@hpre.com

P 630-719-5565

F 630-719-5570

Philip Sheridan

✉ phil_sheridan@hpre.com

P 630-719-5567

F 630-719-5570