

801 Warrenville Road

Suite 55

801 Warrenville Rd, Lisle, IL 60532

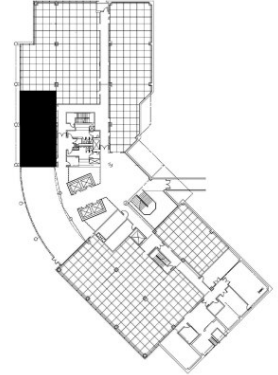
HAMILTON PARTNERS
www.hamiltonpartners.com



SUITE FEATURES

- 10 ft floor to ceiling windows!
- Beautiful views of landscaped pond
- 2 Offices
- Nice open space for workstations
- Storage/Telecom room

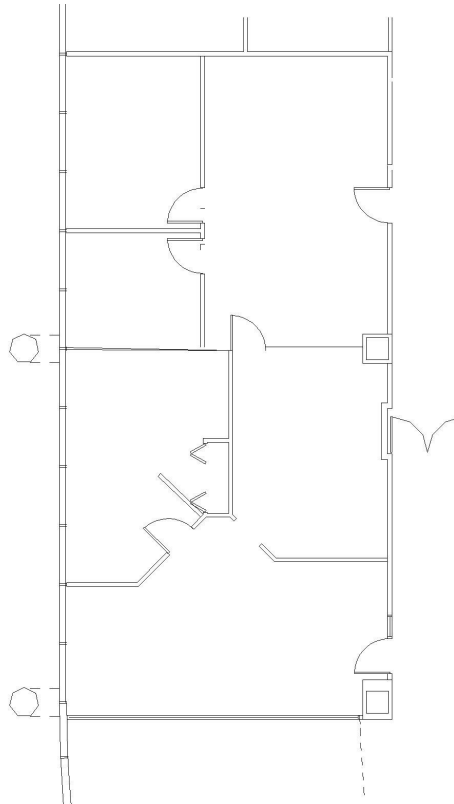
Lake Level FLOOR PLAN



DETAILS

Square Feet: 1,728 S.F.
Net Rent: \$15.00/S.F.
OP. Expense: \$8.30/S.F.
Tax: \$2.94/S.F.
Gross Rent: \$26.24/S.F.

SPACE PLAN



HAMILTON PARTNERS - Sponsoring Broker

Philip Sheridan

phil_sheridan@hpre.com

P 630-719-5567

F 630-719-5570

David Andrews

da@hpre.com

P 630-719-5565

F 630-719-5570