

1011 Warrenville Road

Suite 150 & 160

1011 Warrenville Road, Lisle, IL 60532

HAMILTON PARTNERS
www.hamiltonpartners.com



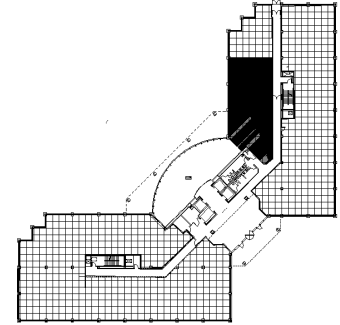
DETAILS

Square Feet: 2,780 S.F.
Net Rent: \$15.75/S.F.
OP. Expense: \$8.67/S.F.
Tax: \$2.95/S.F.
Gross Rent: \$28.08/S.F.

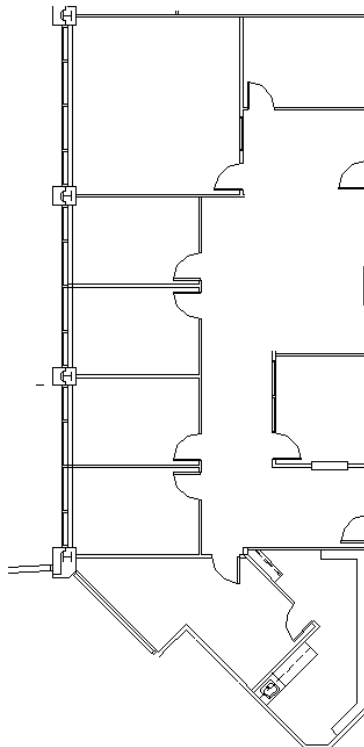
SUITE FEATURES

- Click here for Virtual Tour of 150Â
- Click here for Virtual Tour of 160
- Beautiful first floor space available immediately
- Second floor pond/atrium views
- 6 private offices
- Kitchen
- Workroom
- Large conference room

FIRST FLOOR PLAN



SPACE PLAN



HAMILTON PARTNERS - Sponsoring Broker

David Andrews

✉ da@hpre.com

C 6303270566

Philip Sheridan

✉ phil_sheridan@hpre.com

P 6307195567

C 6303032108