

2001 Butterfield Road  
Suite 1020  
Downers Grove, IL 60515



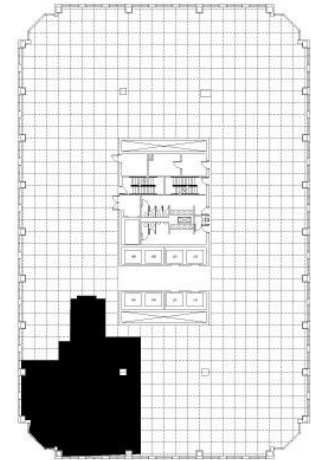
### DETAILS

**Square Feet:** 2,803 S.F.  
**Net Rent:** \$19.75/S.F.  
**OP. Expense:** \$10.75/S.F.  
**Tax:** \$1.86/S.F.  
**Gross Rent:** \$32.36/S.F.

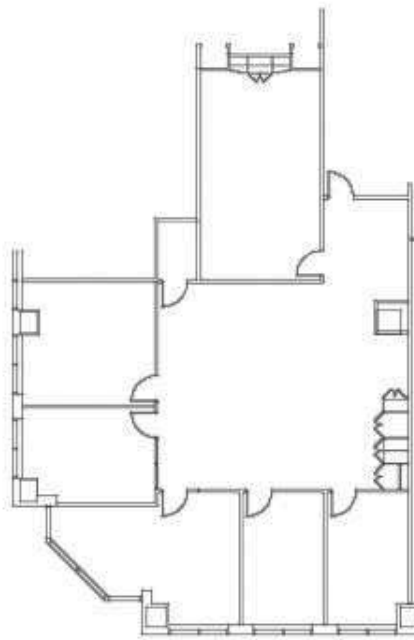
### SUITE FEATURES

- View Amenities
- Efficient Suite
- Nice entry near elevator lobby
- Incredible views from 10th floor!
- 5 Offices
- Large Board Room
- Open area for 4-8 workstations

### TENTH FLOOR PLAN



### SPACE PLAN



### HAMILTON PARTNERS - Sponsoring Broker

**Philip Sheridan**  
✉ [phil\\_sheridan@hpre.com](mailto:phil_sheridan@hpre.com)  
P 6307195567  
C 6303032108

**David Andrews**  
✉ [da@hpre.com](mailto:da@hpre.com)  
C 6303270566