

220 N. Smith Street  
Suite 440  
220 N. Smith Street, Palatine, IL 60067



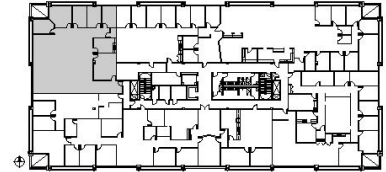
### DETAILS

**Square Feet:** 3,860 S.F.  
**Net Rent:** \$14.00/S.F.  
**OP. Expense:** \$7.26/S.F.  
**Tax:** \$5.99/S.F.  
**Gross Rent:** \$27.25/S.F.

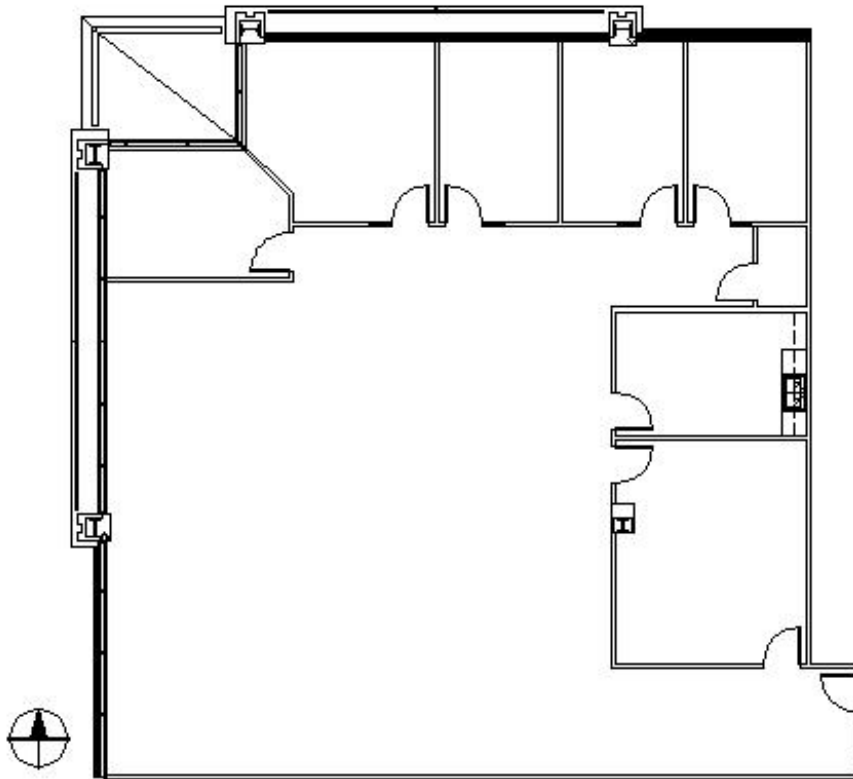
### SUITE FEATURES

- Available October 1, 2021
- 5 Private Offices
- 1 Conference Room
- Server Room
- Kitchen with Cabinetry
- Large Open Area
- Adjacent to Palatine Metra Station
- Covered Parking for All Tenants
- Walking Distance to Restaurants & Shops
- Class A Building with Grand Lobby Entrance

### Fourth FLOOR PLAN



### SPACE PLAN



### CONTACT INFORMATION

#### Brian Lunt

[blunt@hpre.com](mailto:blunt@hpre.com)

P 847-459-2249

F 847-459-8918

#### Mike Rolfs

[mrolfs@hpre.com](mailto:mrolfs@hpre.com)

P 847-459-5561

F 847-459-8918