

901 Warrenville Road
Suite 550
901 Warrenville Road, Lisle, IL 60532

HAMILTON PARTNERS

www.hamiltonpartners.com



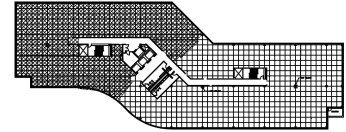
DETAILS

Square Feet: 16,094 S.F.
Net Rent: \$15.75/S.F.
OP. Expense: \$9.51/S.F.
Tax: \$2.41/S.F.
Gross Rent: \$27.67/S.F.

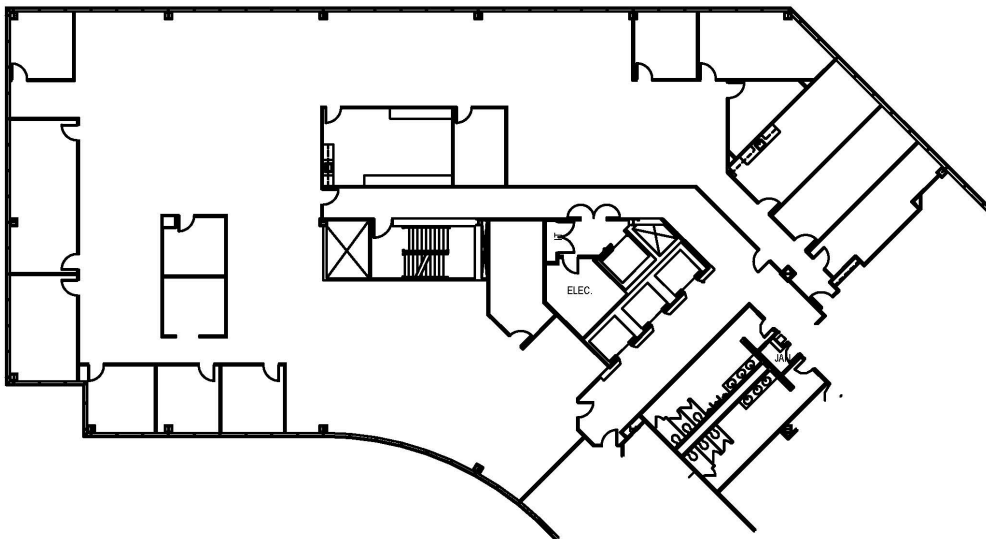
SUITE FEATURES

- Full kitchen
- 13 private offices
- Conference room
- IT/Storage closet
- Open area for workstations with natural light
- Lake View

FIFTH FLOOR PLAN



SPACE PLAN



HAMILTON PARTNERS - Sponsoring Broker

Philip Sheridan

☐ phil_sheridan@hpre.com

P 6307195567

C 6303032108

David Andrews

☐ da@hpre.com

C 6303270566