

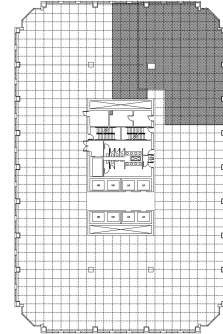
2001 Butterfield Road
Suite 1041, 1042 & 1043
2001 Butterfield Road
Downers Grove, IL 60515



SUITE FEATURES

- Corner space with 9 private offices
- Entry at the end of hall
- Kitchen
- Great views of the city

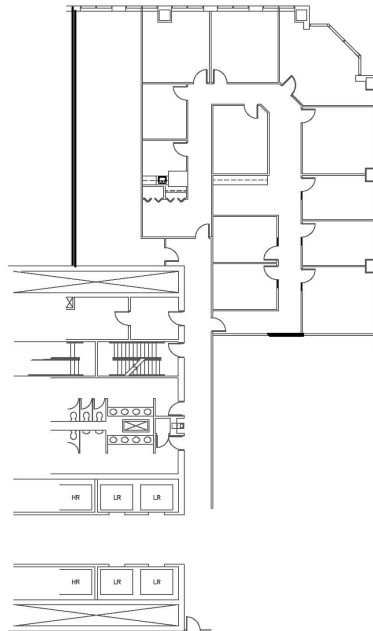
TENTH FLOOR PLAN



DETAILS

Square Feet: 4,875 S.F.
Net Rent: \$19.75/S.F.
OP. Expense: \$10.75/S.F.
Tax: \$1.86/S.F.
Gross Rent: \$32.36/S.F.

SPACE PLAN



HAMILTON PARTNERS - Sponsoring Broker

David Andrews

✉ da@hpre.com

C 6303270566

Philip Sheridan

✉ phil_sheridan@hpre.com

P 6307195567

C 6303032108