

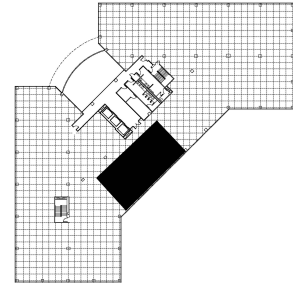
1001 Warrenville Road  
Suite 325  
1001 Warrenville Road  
Lisle, IL 60532



### SUITE FEATURES

- Elevator lobby exposure
- 6 Interior Offices

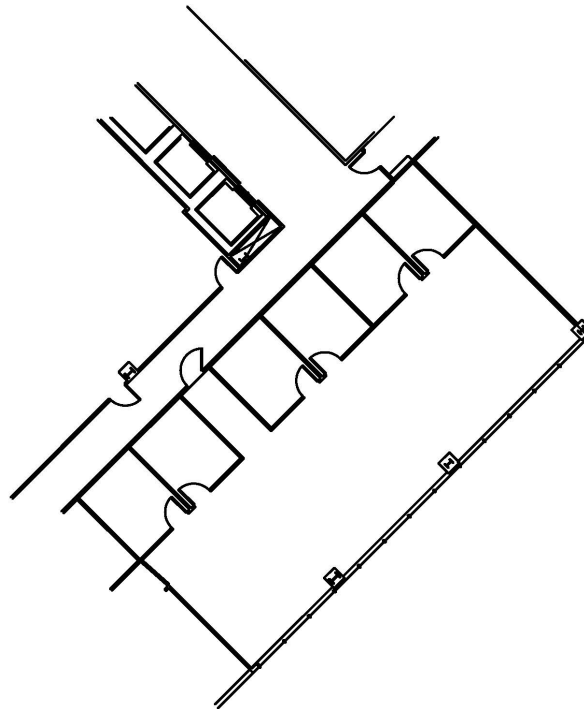
### THIRD FLOOR PLAN



### DETAILS

**Square Feet:** 2,638 S.F.  
**Net Rent:** \$13.75/S.F.  
**OP. Expense:** \$9.20/S.F.  
**Tax:** \$2.60/S.F.  
**Gross Rent:** \$25.55/S.F.

### SPACE PLAN



### HAMILTON PARTNERS - Sponsoring Broker

**David Andrews**

✉ [da@hpre.com](mailto:da@hpre.com)

C 6303270566

**Philip Sheridan**

✉ [phil\\_sheridan@hpre.com](mailto:phil_sheridan@hpre.com)

P 6307195567

C 6303032108