

2001 Butterfield Road
Suite 1600
2001 Butterfield Road
Downers Grove, IL 60515



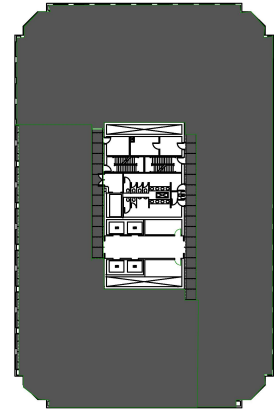
DETAILS

Square Feet: 23,029 S.F.
Net Rent: \$19.75/S.F.
OP. Expense: \$10.75/S.F.
Tax: \$1.86/S.F.
Gross Rent: \$32.36/S.F.

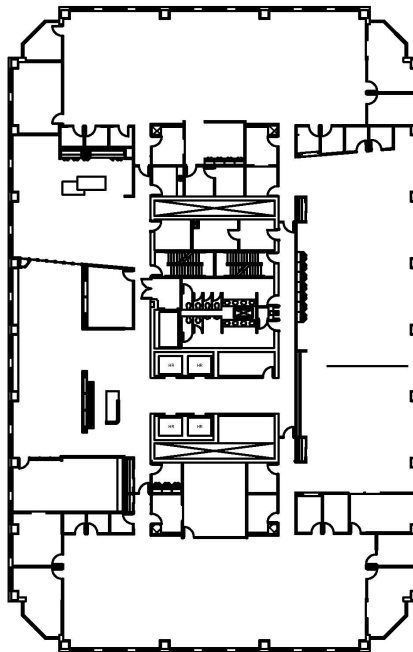
SUITE FEATURES

- View Amenities
- Available 12/1/24
- Nicest space in East WestÂ Corridor
- Newly constructed in 2019 and lightly used
- Employee foyer with folding glass wall to customer area
- Top of the line finishes with open ceilings
- 10 private offices
- 10+ Phone Rooms
- Mother's Room
- 3-4 Meeting Rooms

SIXTEEN FLOOR PLAN



SPACE PLAN



HAMILTON PARTNERS - Sponsoring Broker

David Andrews

✉ da@hpre.com

C 6303270566

Philip Sheridan

✉ phil_sheridan@hpre.com

P 6307195567

C 6303032108