

1901 Butterfield Road
Suite 800 & 810
1901 Butterfield Road
Downers Grove, IL 60515

HAMILTON PARTNERS

www.hamiltonpartners.com



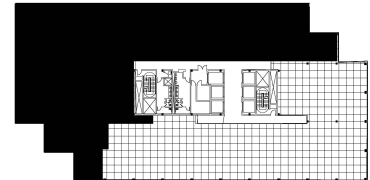
DETAILS

Square Feet: 15,492 S.F.
Net Rent: \$19.75/S.F.
OP. Expense: \$10.30/S.F.
Tax: \$2.76/S.F.
Gross Rent: \$32.26/S.F.

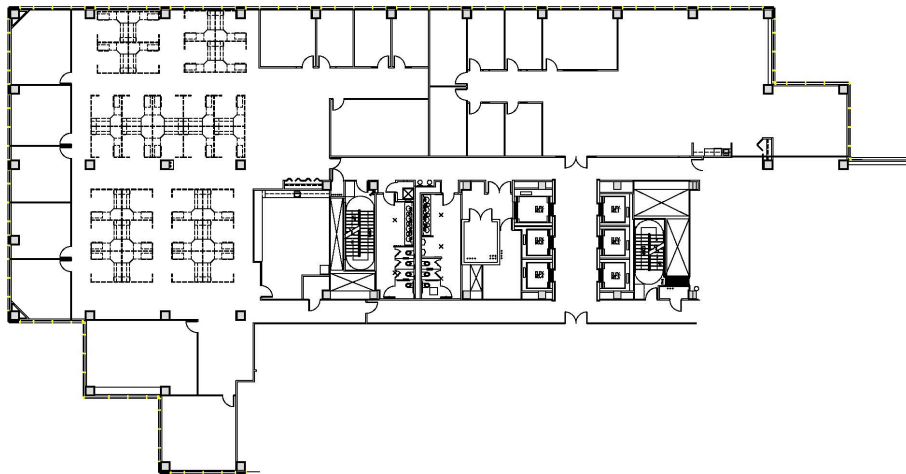
SUITE FEATURES

- Beautiful Hayworth furniture available!!!
- Perfect end-suite with northern views
- 13 private offices
- Offices along northern façade have incredible millwork glass walls
- 3 large conference rooms, 1 medium conference room
- 34 existing workstations
- Large eat-in breakroom
- Elevator lobby entry

EIGHTH FLOOR PLAN



SPACE PLAN



HAMILTON PARTNERS - Sponsoring Broker

David Andrews

✉ da@hpre.com

C 6303270566

Philip Sheridan

✉ phil_sheridan@hpre.com

P 6307195567

C 6303032108