

1011 Warrenville Road

Suite 210

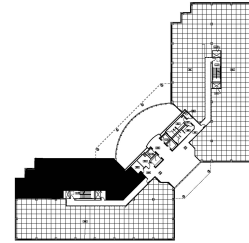
1011 Warrenville Road, Lisle, IL 60532



SUITE FEATURES

- Beautiful 2nd floor space available immediately
- Pond/atrium views
- 5 private offices
- 2 Conference rooms
- Kitchen
- Copy area
- 16 Workstations
- Partially furnished

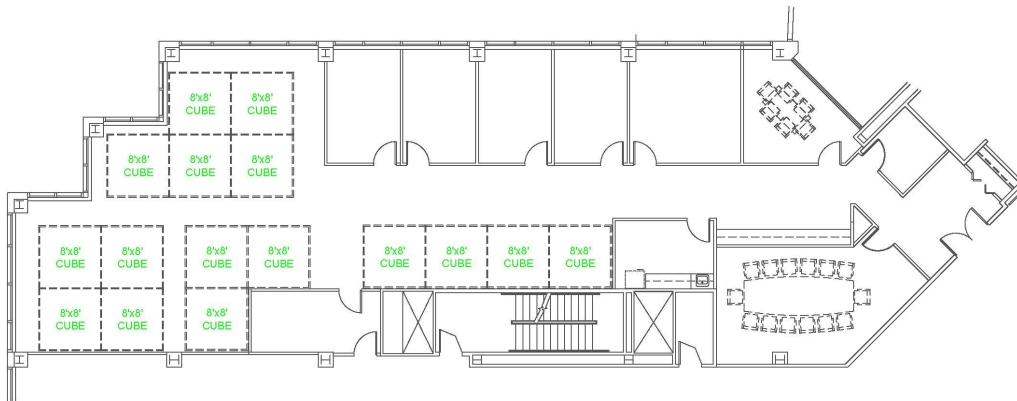
SECOND FLOOR PLAN



DETAILS

Square Feet: 5,168 S.F.
Net Rent: \$15.75/S.F.
OP. Expense: \$9.53/S.F.
Tax: \$2.80/S.F.
Gross Rent: \$28.08/S.F.

SPACE PLAN



HAMILTON PARTNERS - Sponsoring Broker

David Andrews

✉ da@hpre.com

C 6303270566

Philip Sheridan

✉ phil_sheridan@hpre.com

P 6307195567

C 6303032108