

1901 Butterfield Road
Suite 640
Downers Grove, IL 60515



DETAILS

Square Feet: 5,346 S.F.
Net Rent: \$19.75/S.F.
OP. Expense: \$10.62/S.F.
Tax: \$1.89/S.F.
Gross Rent: \$32.26/S.F.

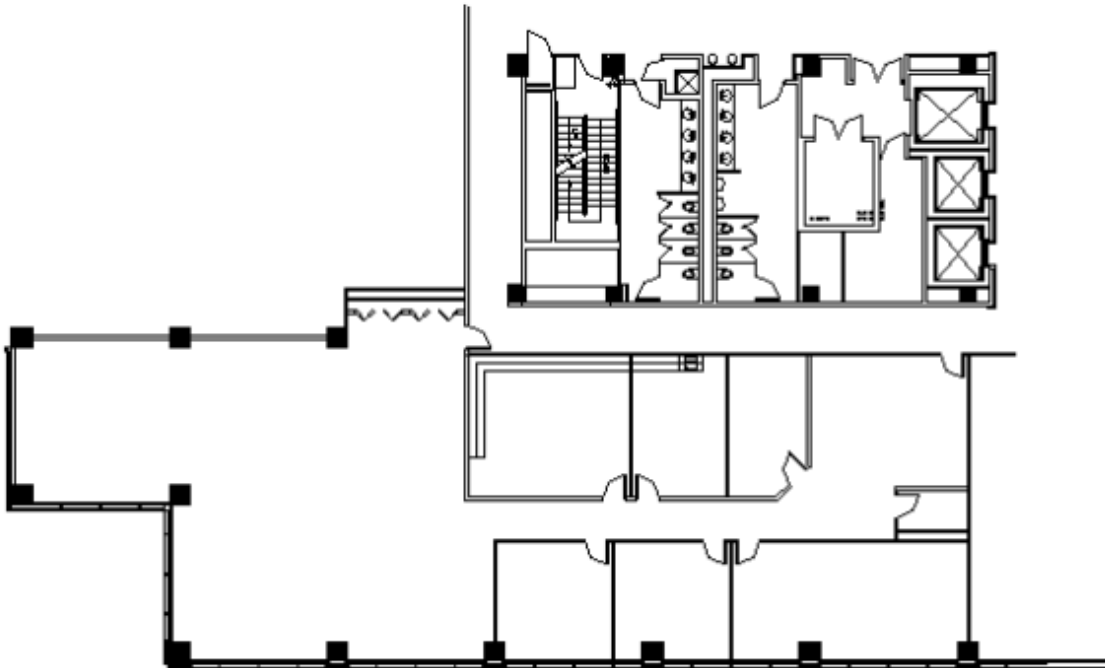
SUITE FEATURES

- Glass entry
- 2 private offices
- 2 glass walled conference rooms
- Kitchen area
- Workroom
- Open Area for workstations
- IT Room with 3 ton supplemental A/C Unit

SIXTH FLOOR FLOOR PLAN



SPACE PLAN



HAMILTON PARTNERS - Sponsoring Broker

Gary Mori
✉ gary_mori@hpre.com
P 630-719-5560
F 630-719-5570

Philip Sheridan
✉ phil_sheridan@hpre.com
P 6307195567
C 6303032108

David Andrews
✉ da@hpre.com
C 6303270566