

220 N. Smith Street
Suite 420-430
220 N. Smith Street, Palatine, IL 60067



DETAILS

Square Feet: 9,054 S.F.
Net Rent: \$14.00/S.F.
OP. Expense: \$8.15/S.F.
Tax: \$6.75/S.F.
Gross Rent: \$28.90/S.F.

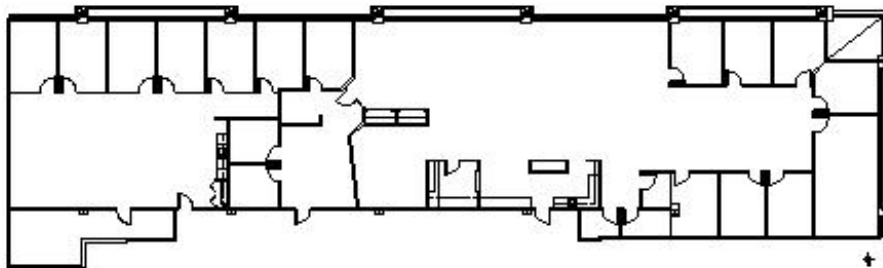
SUITE FEATURES

- Combination of Suite 420-430
- Prime Location in Downtown Palatine
- Multiple Private Offices along Windowline
- 2 Conference Rooms
- High End Finishes
- Elevator Lobby Exposure
- Adjacent to Palatine Metra Station
- Covered Parking for All Tenants
- Walking Distance to Restaurants & Shops
- Class A Building with Grand Lobby Entrance

Fourth FLOOR PLAN



SPACE PLAN



HAMILTON PARTNERS - Sponsoring Broker

Brian Lunt

blunt@hpre.com

P 847-459-2249

F 847-459-8918

Mike Rolfs

mrolfs@hpre.com

P 847-459-5561

F 847-459-8918