

**2001 Butterfield Road**

*Suite 268*

*2001 Butterfield Road, Downers Grove, IL  
60515*

**HAMILTON**  
www.hamiltonpartners.com **PARTNERS**



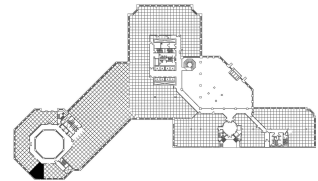
## DETAILS

**Square Feet:** 450 S.F.  
**Net Rent:** \$19.75/S.F.  
**OP. Expense:** \$10.03/S.F.  
**Tax:** \$2.57/S.F.  
**Gross Rent:** \$32.35/S.F.

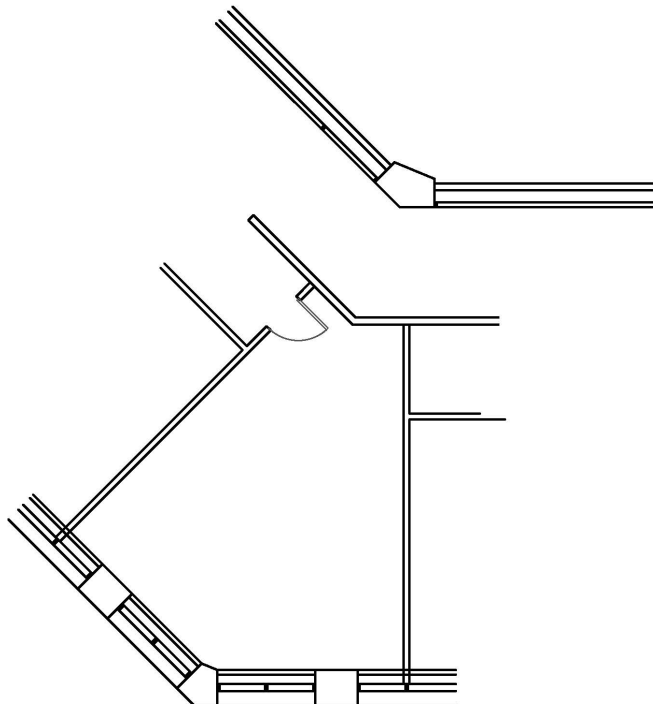
## SUITE FEATURES

- Perfect for 1 or 2 person office
- South facing suite that floods with sunlight
- Close proximity to amenities at the Esplanade Complex
- Esplanade-at-Locust-Point-Amenities

## SECOND FLOOR PLAN



## SPACE PLAN



## HAMILTON PARTNERS - Sponsoring Broker

**David Andrews**

☐ [da@hpre.com](mailto:da@hpre.com)

C 6303270566

**Philip Sheridan**

☐ [phil\\_sheridan@hpre.com](mailto:phil_sheridan@hpre.com)

P 6307195567

C 6303032108