

2001 Butterfield Road
Suite 600
Downers Grove, IL 60515



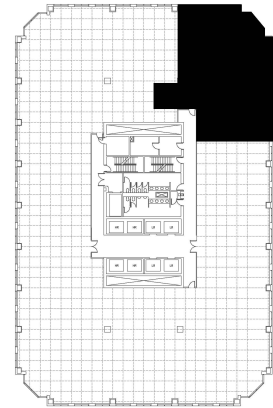
DETAILS

Square Feet: 3,356 S.F.
Net Rent: \$19.75/S.F.
OP. Expense: \$10.75/S.F.
Tax: \$1.86/S.F.
Gross Rent: \$32.36/S.F.

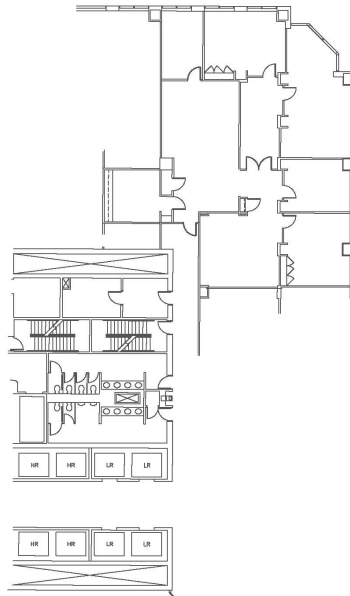
SUITE FEATURES

- View Amenities
- Glass entry in elevator lobby
- Very high-end finishes throughout with luxurious details
- 9 private offices with full demising walls
- Kitchen within space
- Glass doors to every office
- Large and small conference room
- Beautiful views with floor to ceiling windows

SIXTH FLOOR PLAN



SPACE PLAN



HAMILTON PARTNERS - Sponsoring Broker

David Andrews

✉ da@hpre.com

C 6303270566

Philip Sheridan

✉ phil_sheridan@hpre.com

P 6307195567

C 6303032108