

3250 Lacey Road
Suite 161
3250 Lacey Road
Downers Grove, IL 60515

HAMILTON PARTNERS

www.hamiltonpartners.com



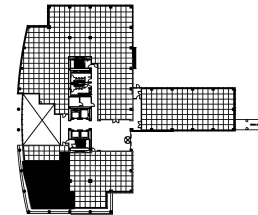
DETAILS

Square Feet: 2,446 S.F.
Net Rent: \$19.75/S.F.
OP. Expense: \$11.11/S.F.
Tax: \$2.55/S.F.
Gross Rent: \$33.41/S.F.

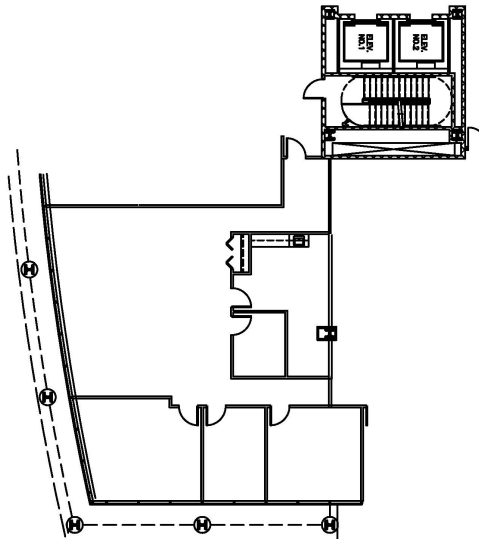
SUITE FEATURES

- Very strong lobby identity
- Reception area
- 6 private offices
- Conference room
- Kitchen
- Manned security in lobby

FIRST FLOOR PLAN



SPACE PLAN



HAMILTON PARTNERS - Sponsoring Broker

David Andrews

☐ da@hpre.com

C 6303270566

Philip Sheridan

☐ phil_sheridan@hpre.com

P 6307195567

C 6303032108