

1901 Butterfield Road

Suite 660

1901 Butterfield Road, Downers Grove, IL
60515

HAMILTON PARTNERS
www.hamiltonpartners.com



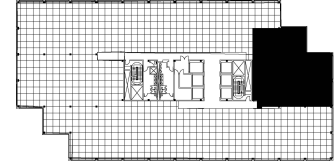
DETAILS

Square Feet: 3,889 S.F.
Net Rent: \$19.75/S.F.
OP. Expense: \$10.80/S.F.
Tax: \$2.22/S.F.
Gross Rent: \$32.77/S.F.

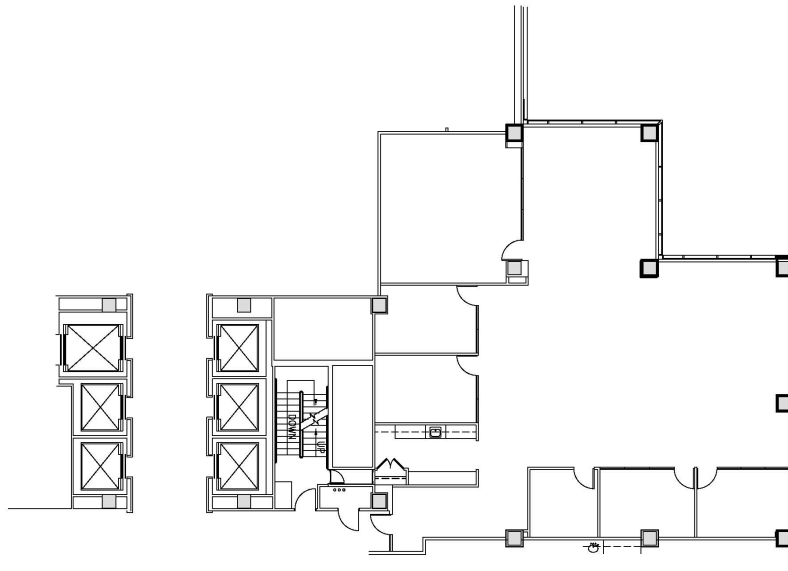
SUITE FEATURES

- Turnkey space, fully furnished and wired
- Beautiful new finishes
- New LED lighting and new ceiling tile
- Beautiful kitchen with sink
- 15 existing workstations
- 2 conference rooms
- 3 private offices
- Glass entry
- Private phone station

SIXTH FLOOR FLOOR PLAN



SPACE PLAN



HAMILTON PARTNERS - Sponsoring Broker

Philip Sheridan

phil_sheridan@hpre.com

P 6307195567

C 6303032108

David Andrews

da@hpre.com

C 6303270566