

1901 Butterfield Road  
Suite 450  
Downers Grove, IL 60515

[Click for Virtual Tour](#)

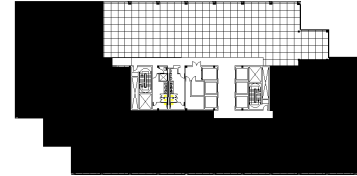
HAMILTON PARTNERS  
www.hamiltonpartners.com



### SUITE FEATURES

- [Click here for virtual tour](#)
- Incredible space available immediately!
- Largest space opportunity at 1901 Butterfield
- Efficient space plan with perimeter offices
- 24 private offices
- Glass entry in elevator lobby
- Interior training room
- 2 conference rooms
- Kitchen
- Deep open area great for workstations
- Esplanade-at-Locust-Point-Amenities

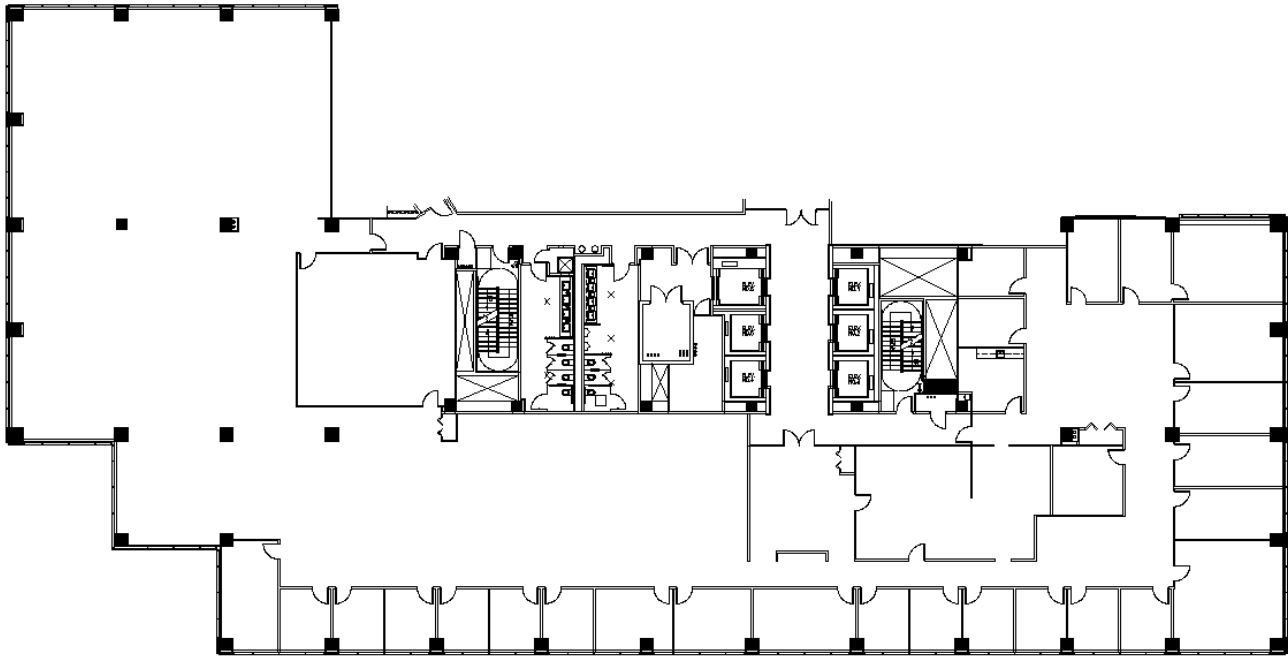
### FOURTH FLOOR PLAN



### DETAILS

**Square Feet:** 20,050 S.F.  
**Net Rent:** \$19.75/S.F.  
**OP. Expense:** \$10.62/S.F.  
**Tax:** \$1.89/S.F.  
**Gross Rent:** \$32.26/S.F.

### SPACE PLAN



### HAMILTON PARTNERS - Sponsoring Broker

**David Andrews**

[da@hpre.com](mailto:da@hpre.com)

C 6303270566

**Philip Sheridan**

[phil\\_sheridan@hpre.com](mailto:phil_sheridan@hpre.com)

P 6307195567

C 6303032108