

2001 Butterfield Road
Suite 640
2001 Butterfield Road
Downers Grove, IL 60515



DETAILS

Square Feet: 7,268 S.F.
Net Rent: \$19.75/S.F.
OP. Expense: \$10.75/S.F.
Tax: \$1.86/S.F.
Gross Rent: \$32.36/S.F.

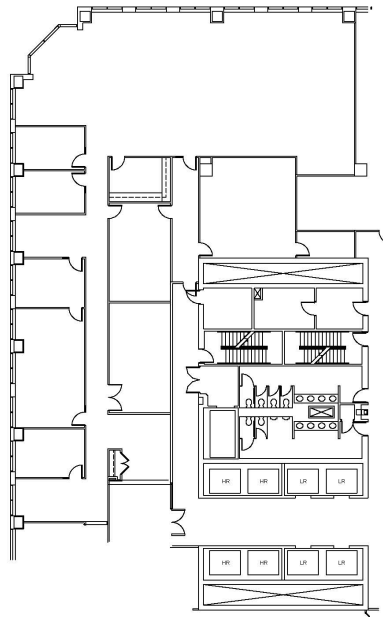
SUITE FEATURES

- 4-5 private offices
- 2- large conference rooms
- Large workroom/storage
- Nice open area for workstations
- Can be combined with adjacent suite for 10,624 RSF total
- Floor to ceiling windows!

SIXTH FLOOR PLAN



SPACE PLAN



HAMILTON PARTNERS - Sponsoring Broker

David Andrews

✉ da@hpre.com

C 6303270566

Philip Sheridan

✉ phil_sheridan@hpre.com

P 6307195567

C 6303032108