

2001 Butterfield Road

Suite 160 & 165

2001 Butterfield Road, Downers Grove, IL
60515



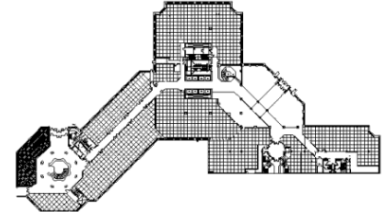
DETAILS

Square Feet: 2,675 S.F.
Net Rent: \$19.75/S.F.
OP. Expense: \$8.81/S.F.
Tax: \$2.69/S.F.
Gross Rent: \$31.25/S.F.

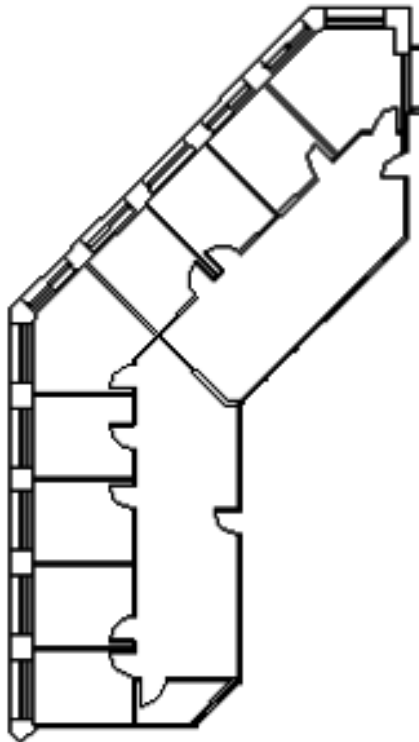
SUITE FEATURES

- Esplanade rotunda lobby exposure
- Reception area
- 2 conference rooms
- 7 offices
- Storage room
- Work area
- 11-Foot ceilings
- View of entrance and landscape
- Floor to ceiling windows on either side of office!

FIRST FLOOR PLAN



SPACE PLAN



HAMILTON PARTNERS - Sponsoring Broker

David Andrews

✉ da@hpre.com

C 6303270566

Philip Sheridan

✉ phil_sheridan@hpre.com

P 6307195567

C 6303032108