

2001 Butterfield Road  
Suite 168  
2001 Butterfield Road  
Downers Grove, IL 60515



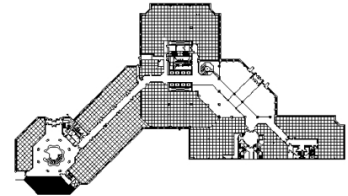
### DETAILS

**Square Feet:** 1,847 S.F.  
**Net Rent:** \$19.75/S.F.  
**OP. Expense:** \$9.64/S.F.  
**Tax:** \$2.58/S.F.  
**Gross Rent:** \$31.97/S.F.

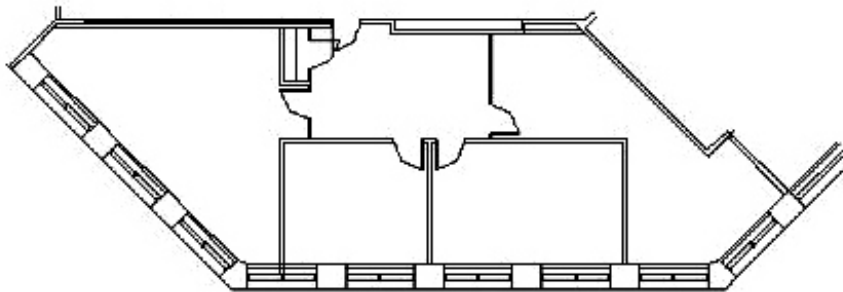
### SUITE FEATURES

- First floor space with 2nd floor windowline!
- 11 foot ceiling height
- Floor to ceiling windows
- Large conference room
- 2 offices
- Storage/multipurpose room
- Esplanade-at-Locust-Point-Amenities

### FIRST FLOOR PLAN



### SPACE PLAN



### HAMILTON PARTNERS - Sponsoring Broker

**David Andrews**

✉ [da@hpre.com](mailto:da@hpre.com)

C 6303270566

**Philip Sheridan**

✉ [phil\\_sheridan@hpre.com](mailto:phil_sheridan@hpre.com)

P 6307195567

C 6303032108