

2001 Butterfield Road  
Suite 1900  
Downers Grove, IL 60515

[Click for Virtual Tour](#)

HAMILTON PARTNERS  
www.hamiltonpartners.com



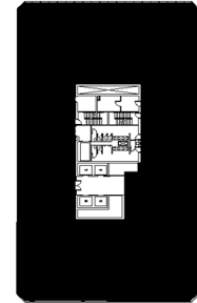
## DETAILS

**Square Feet:** 18,145 S.F.  
**Net Rent:** \$19.75/S.F.  
**OP. Expense:** \$9.64/S.F.  
**Tax:** \$2.58/S.F.  
**Gross Rent:** \$31.82/S.F.

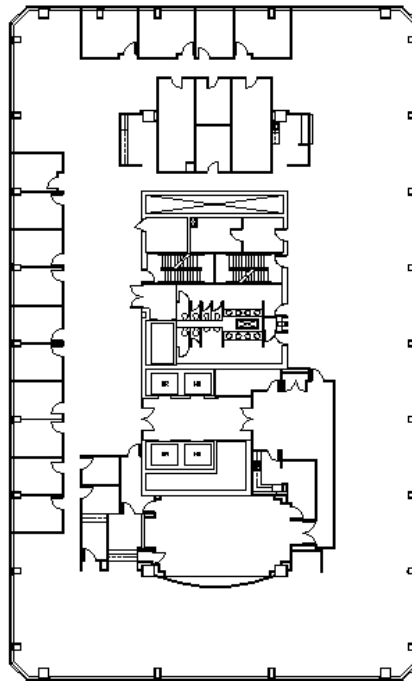
## SUITE FEATURES

- [Click here for Virtual Tour](#)
- Rare top 19th floor opportunity at the Esplanade
- Desirable build out with 20 exterior offices including 3 corner executive offices
- 2 kitchens with sinks
- Beautiful large board room
- 10 foot ceilings
- 360 degree views of city and Morton Arboretum
- Esplanade-at-Locust-Point-Amenities

## NINETEENTH FLOOR PLAN



## SPACE PLAN



## HAMILTON PARTNERS - Sponsoring Broker

**David Andrews**

[da@hpre.com](mailto:da@hpre.com)

C 6303270566

**Philip Sheridan**

[phil\\_sheridan@hpre.com](mailto:phil_sheridan@hpre.com)

P 6307195567

C 6303032108