

3250 Lacey Road
Suite 140
3250 Lacey Rd, Downers Grove, IL 60515



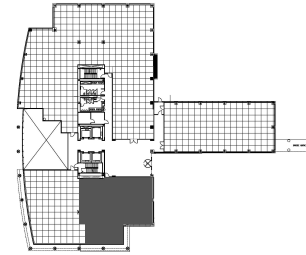
DETAILS

Square Feet: 3,433 S.F.
Net Rent: \$19.75/S.F.
OP. Expense: \$11.70/S.F.
Tax: \$1.94/S.F.
Gross Rent: \$33.39/S.F.

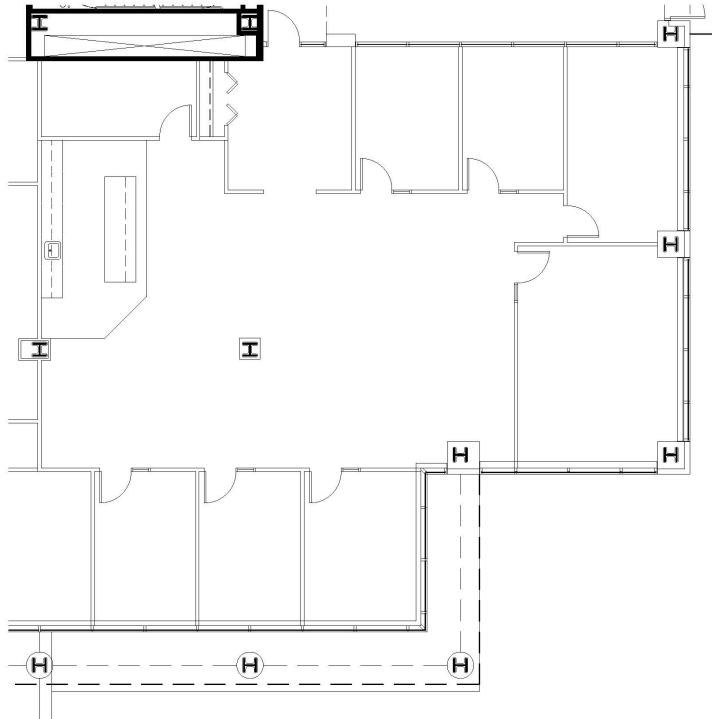
SUITE FEATURES

- Great first floor space with incredible lobby I.D.
- Nice views of landscaping
- 6 private offices
- Large conference room
- Modern open kitchen concept
- Room for 12-14 workstations
- IT/Storage
- Furniture may be possible

1st FLOOR PLAN



SPACE PLAN



HAMILTON PARTNERS - Sponsoring Broker

Philip Sheridan
phil_sheridan@hpre.com
P 6307195567
C 6303032108

David Andrews
da@hpre.com
C 6303270566