

2001 Butterfield Road

Suite 105

2001 Butterfield Road, Downers Grove, IL
60515



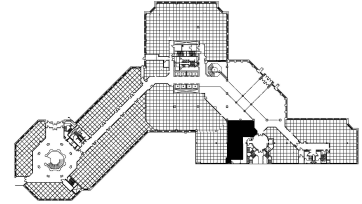
DETAILS

Square Feet: 2,408 S.F.
Net Rent: \$19.75/S.F.
OP. Expense: \$10.53/S.F.
Tax: \$2.32/S.F.
Gross Rent: \$32.60/S.F.

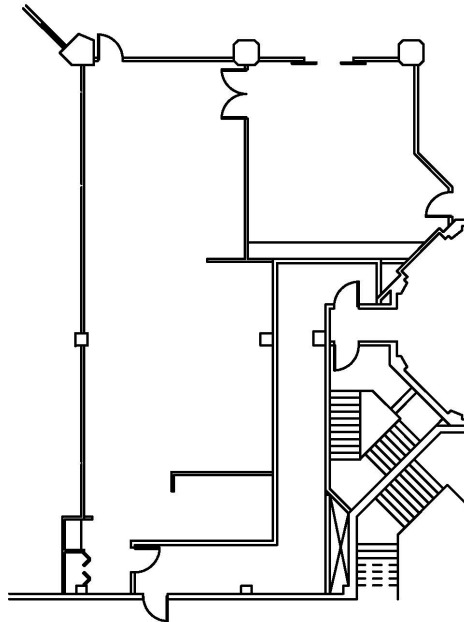
SUITE FEATURES

- View Amenities
- Great for a Medical Office
- Unparalleled Main Lobby exposure
- 12 foot ceiling height
- Great access to all of Esplanade's amenities
- Large bullpen for workstations
- Glass Boardroom

FIRST FLOOR PLAN



SPACE PLAN



HAMILTON PARTNERS - Sponsoring Broker

Philip Sheridan

✉ phil_sheridan@hpre.com

P 6307195567

C 6303032108

David Andrews

✉ da@hpre.com

C 6303270566